

# Prognostic impacts of serum uric acid levels in patients with chronic heart failure: insights from the CHART-2 study

Takahide Fujihashi<sup>1</sup>, Yasuhiko Sakata<sup>1,2\*</sup>, Kotaro Nochioka<sup>1,2</sup>, Masanobu Miura<sup>1</sup>, Ruri Abe<sup>1</sup>, Shintaro Kasahara<sup>1</sup>, Masayuki Sato<sup>1</sup>, Hajime Aoyanagi<sup>1</sup>, Shinsuke Yamanaka<sup>1</sup>, Hideka Hayashi<sup>1</sup>, Takashi Shiroto<sup>1</sup>, Koichiro Sugimura<sup>1</sup>, Jun Takahashi<sup>1</sup>, Satoshi Miyata<sup>3</sup>, Hiroaki Shimokawa<sup>1,2,3</sup> on behalf of the CHART-2 Investigators

<sup>1</sup>Department of Cardiovascular Medicine, Tohoku University Graduate School of Medicine, 1-1 Seiryomachi, Aoba-ku, Sendai, 980-8574, Japan; <sup>2</sup>Big Data Medicine Center, Tohoku University, Sendai, Japan; <sup>3</sup>Department of Evidence-Based Cardiovascular Medicine, Tohoku University Graduate School of Medicine, Sendai, Japan

## Abstract

**Aims** Prognostic impacts of serum uric acid (UA) levels in patients with chronic heart failure (CHF) remain inconclusive, especially for the whole range of serum UA levels.

**Methods and results** In the Chronic Heart Failure Registry and Analysis in the Tohoku District-2 (CHART-2) study, we enrolled 4652 consecutive patients with CHF and classified them into four groups based on baseline serum UA levels by the Classification and Regression Tree: G1 (<3.8 mg/dL, *N* = 313), G2 (3.8–7.1 mg/dL, *N* = 3070), G3 (7.2–9.2 mg/dL, *N* = 1018), and G4 (>9.2 mg/dL, *N* = 251). Mean age was 71 ± 12, 69 ± 12, 68 ± 13, and 69 ± 15 years in G1, G2, G3, and G4, respectively (*P* < 0.001). During the median follow-up of 6.3 years, in G1, G2, G3, and G4, 111 (35%), 905 (29%), 370 (36%), and 139 (55%) patients died and 79 (25%), 729 (24%), 300 (29%), and 115 (46%) experienced heart failure hospitalization, respectively (both *P* < 0.001). G1 was characterized by a significantly high prevalence of women as compared with G2, G3, and G4 (59%, 32%, 24%, and 23%, respectively). Serum creatinine levels (0.8 ± 0.4, 0.9 ± 0.4, 1.2 ± 0.6, and 1.4 ± 0.8 mg/dL, respectively), prevalence of atrial fibrillation (34%, 39%, 45%, and 50%, respectively), and diuretics use (36%, 45%, 67%, and 89%, respectively) increased from G1, G2, G3 to G4 (all *P* < 0.001), while left ventricular ejection fraction decreased from G1, G2, G3 to G4 (59 ± 15, 58 ± 15, 54 ± 15, and 52 ± 17%, respectively, *P* < 0.001). Multivariable Cox proportional hazards models showed that, as compared with G2, both G1 and G4 had increased incidence of all-cause death [adjusted hazard ratio (aHR) 1.34, 95% confidence interval (CI) 1.08–1.67, *P* = 0.009; aHR 1.28, 95% CI 1.02–1.61, *P* = 0.037, respectively] and heart failure admission (aHR 1.39, 95% CI 1.09–1.78, *P* = 0.008 and aHR 1.35, 95% CI, 1.06–1.71, *P* = 0.014, respectively). This U-shaped relationship was evident in the elderly patients. Furthermore, abnormal transitions to either higher or lower levels of serum UA from G2 were associated with increased mortality (aHR 1.29, 95% CI 1.06–1.57, *P* = 0.012; aHR 1.57, 95% CI 1.12–2.20, *P* = 0.009).

**Conclusions** These results demonstrate that serum UA levels have the U-shaped prognostic effects and abnormal transitions to either higher or lower levels are associated with poor prognosis in the elderly patients with CHF.

**Keywords** Heart failure; Uric acid; Prognosis; Biomarker

Received: 24 October 2019; Revised: 29 March 2020; Accepted: 27 April 2020

\*Correspondence to: Yasuhiko Sakata, MD, PhD, Department of Cardiovascular Medicine, Tohoku University Graduate School of Medicine, 1-1 Seiryomachi, Aoba-ku, Sendai 980-8574, Japan. Phone: +81-22-717-7152; Fax: +81-22-717-7156. Email: sakatayk@cardio.med.tohoku.ac.jp

Clinical trial registration: URL: <http://www.clinicaltrials.gov>. Unique identifier: NCT00418041.

## Introduction

Relationships between serum uric acid (UA) and cardiovascular (CV) diseases have been reported for many years, and some reports indicated prognostic association.<sup>1–9</sup> However, the usefulness of elevated serum UA as an independent risk marker of CV diseases and/or events is still controversial.<sup>1</sup> Several epidemiological studies showed that both low and high serum UA levels were predictive of poor prognosis, indicating the J-shaped or U-shaped relationship between serum UA levels and CV events in the general<sup>2</sup> and elderly<sup>3</sup> populations as well as in patients with hypertension,<sup>4</sup> diabetes mellitus,<sup>5</sup> and haemodialysis.<sup>6</sup> On the other hand, some studies reported a lack of relationship between serum UA levels and CV events.<sup>7</sup> Recently, the number of patients with heart failure (HF) has been rapidly increasing, and this pandemic of HF has raised an emerging healthcare concern worldwide.<sup>10,11</sup> Many studies suggested that elevated serum UA levels are associated with poor prognosis in a relatively small CHF cohort.<sup>12–15</sup> However, it is still inconclusive whether hyperuricaemia is a simple marker<sup>7</sup> or a causative factor<sup>16</sup> of worsening prognosis in patients with HF. To the best of our knowledge, few large-scale studies have examined the relationship between serum UA levels and long-term prognosis. Furthermore, no studies have addressed the prognostic effects of whole range of serum UA, and the prognostic significance of temporal changes in serum UA levels also remains to be examined. In the present study, we thus aimed to evaluate the association between serum UA levels and long-term prognosis in patients with CHF in our Chronic Heart Failure Registry and Analysis in the Tohoku District-2 (CHART-2) study.

## Methods

### Study design

The CHART-2 study is a prospective, multicentre, observational cohort study for HF in Japan, and the details have been described previously (UMIN:000000562, NCT00418041).<sup>17–20</sup> Briefly, 10 219 consecutive stable patients aged  $\geq 20$  years with coronary artery disease ( $N = 868$ ), asymptomatic structural heart disease (Stage B,  $N = 4475$ ), and a current or past history of HF (Stage C/D,  $N = 4876$ ) were registered from the 24 participating hospitals between October 2006 and March 2010. The diagnosis of HF was made by attending experienced cardiologists based on the criteria of the Framingham study,<sup>21</sup> and stages of HF were determined according to the ACC/AHA guidelines.<sup>22</sup> All of the patient information, including demography, medical history, laboratory, echocardiography, and angiography data, were recorded at the time of enrolment and annually thereafter by trained clinical research coordinators.

The study protocol was approved by the local Ethics Committee of each participating hospital, and written informed consent was obtained from all patients. In the present study, we finally enrolled 4652 consecutive patients with CHF in Stage C/D after excluding 179 with insufficient data and 55 patients on haemodialysis. In the CHART-2 study, the use of UA lowering drugs and a therapeutic target of UA  $< 6$  mg/dL were considered to indicate hyperuricaemia at risk for gout, urolithiasis, and CV diseases, according to the Japanese guideline for management of hyperuricaemia and gout.<sup>23</sup>

### Statistical analysis

All of the potential confounding factors were included in the univariable regression analysis, and factors were then selected using stepwise variable selection procedure. The covariates included in the present study that may have potentially influenced serum UA were as follows: age, sex, body mass index (BMI), systolic blood pressure, heart rate, smoking, New York Heart Association (NYHA) III/IV, HF admission, hypertension, diabetes mellitus, dyslipidaemia, atrial fibrillation, stroke, cancer, drinking history, ischaemic heart disease, left ventricular ejection fraction (LVEF), LV end-diastolic dimension (LVDd), blood chemistry data [serum levels of haemoglobin, creatinine, and brain natriuretic peptide (BNP)], and use of drugs [angiotensin-converting-enzyme inhibitors (ACE-Is), angiotensin II receptor blockers (ARBs), beta-blockers, calcium channel blockers, diuretics, statins, and UA lowering drugs]. The non-linear association between serum UA levels and mortality was evaluated by using an additive Cox proportional hazard regression model with a cubic spline curve using 'mgcv' package of R software. A cut-off point of serum UA levels was determined based on the results of the survival classification and regression trees (CART) with the 'rpart' and the 'survival' packages of the R software.<sup>24</sup> The CART provides a binary decision tree for classification and regression based on recursive partitioning of the data space and sequentially determines conditioning variables and their splitting points for partitioning to fit a simple prediction model within each partition.<sup>24</sup> The survival CART is the CART considering survival time as an outcome.<sup>25</sup> We determined cut-offs of serum UA levels using survival CART analysis. We compared the baseline characteristics and the prognosis among patient groups. Descriptive statistics, including mean  $\pm$  SD, frequency (percentage) for continuous, and categorical data, are given according to the groups. Triglyceride (TG), BNP, and C-reactive protein are described as median (interquartile range) due to skewed distribution. Group comparisons were performed using ANOVA and Kruskal–Wallis test for continuous variables and Fisher's exact test for categorical variables. Survival curves were estimated using the Kaplan–Meier procedure and compared with log-rank test adjusted by the Bonferroni correction for  $P$  value. We also

estimated incidence of CV death and non-CV death on the basis of 1000 person-years. To determine independent predictors of mortality of patients with HF, multivariable Cox proportional hazards regression models were applied in each serum UA groups with the following variables using stepwise variable selection procedure: age, sex, BMI, heart rate, NYHA III/IV, HF admission, hypertension, diabetes mellitus, atrial fibrillation, stroke, cancer, drinking history, ischaemic heart disease, LVEF, haemoglobin, creatinine, ACE-I/ARBs, beta-blockers, calcium channel blockers, diuretics, and statins. Subgroup analyses were performed, and the interaction of each subgroup including age, sex, LVEF, estimated glomerular filtration rate, nutrition status assessed by controlling nutritional status score, ischaemic heart disease, diuretics, and UA lowering agents was evaluated. Among the patients who had serum UA levels at both baseline and 1 year follow-up, transitions among the groups from baseline to 1 year were determined, and then the relationship between the transitions and long-term prognosis thereafter was examined with Kaplan–Meier procedure and multivariable Cox proportional hazards models. To evaluate the factors associated with UA category transitions at 1 year, multinomial logistic regression analysis was performed with the following covariates: age, sex, BMI, smoking, drinking history, ischaemic heart disease, hypertension, diabetes mellitus, dyslipidaemia, atrial fibrillation, stroke, cancer, HF admission, NYHA III/IV, systolic BP, heart rate, LVEF, LVDd, serum levels of haemoglobin, creatinine, and BNP, and use of ACE-Is, ARBs, beta-blockers, calcium channel blockers, diuretics, UA lowering drugs, and statins at baseline. Two-sided  $P < 0.05$  was considered to be statistically significant. These statistical analyses were performed using the open-source statistics computing R

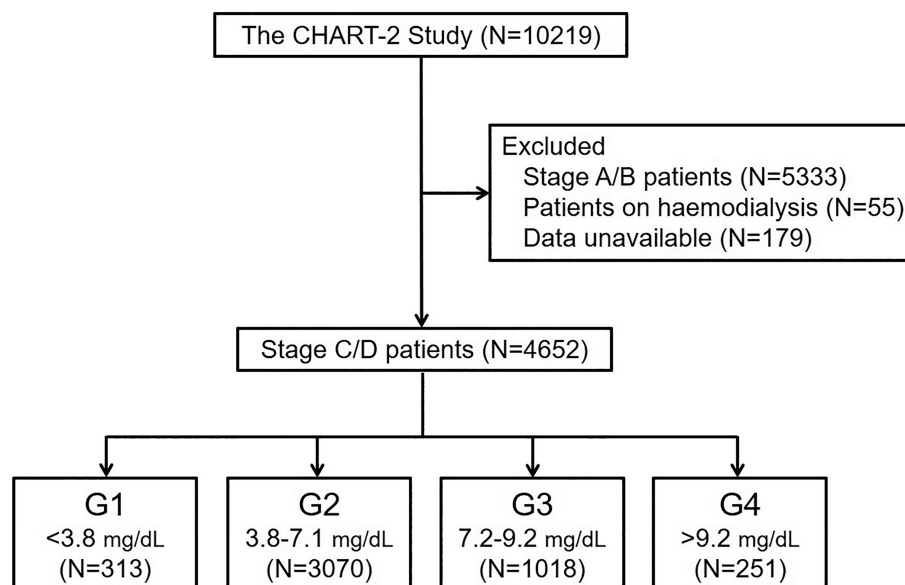
software (version 3.5.3) (R Foundation for Statistical Computing, Vienna, Austria).

## Results

### Patient characteristics

Based on the cut-off values determined by the CART, 4652 patients were divided into four groups: G1 ( $<3.8$  mg/dL,  $N = 313$ ), G2 ( $3.8$ – $7.1$  mg/dL,  $N = 3070$ ), G3 ( $7.2$ – $9.2$  mg/dL,  $N = 1018$ ), and G4 ( $>9.2$  mg/dL,  $N = 251$ ) (Figure 1). At enrolment, 821 patients (18%) were treated with UA lowering drugs: uricosuric drugs for 180 (4%) and UA synthesis inhibitor for 641 (14%) (Supporting Information, Figure S1). Table 1 shows baseline patient characteristics. Mean age in G1, G2, G3, and G4 was  $71 \pm 12$ ,  $69 \pm 12$ ,  $68 \pm 13$ , and  $69 \pm 15$  years, respectively ( $P < 0.001$ ). G1 was characterized by a significantly higher prevalence of women as compared with the other three groups. Serum creatinine levels, prevalence of atrial fibrillation, and frequency of diuretics use increased from G1, G2, G3 to G4, while LVEF decreased from G1, G2, G3 to G4. Median BNP levels were comparably low in G1 and G2 and then increased to G3 and G4. As a HF aetiology, prevalence of ischaemic heart disease was highest in G2 and lowest in G4 while that of dilated cardiomyopathy increased from G1, G2, G3 to G4. These trends were also noted in the subgroups divided by age  $\geq 70$  years (Supporting Information, Table S1A,B), although patients aged  $\geq 70$  years were characterized by higher prevalence of women and atrial fibrillation, higher BNP levels, higher frequency of diuretic

Figure 1 Study flowchart. CHART, Chronic Heart Failure Registry and Analysis in the Tohoku District-2.



**Table 1** Baseline clinical characteristics of heart failure patients by serum uric acid levels

	G1 (N = 313)	G2 (N = 3070)	G3 (N = 1018)	G4 (N = 251)	P value
Age (years)	70.7 ± 11.9	69.3 ± 11.7	67.5 ± 13.1	68.9 ± 15.3	<0.001
Female, n (%)	186 (59.4)	993 (32.3)	244 (24.0)	57 (22.7)	<0.001
BMI (kg/m <sup>2</sup> )	22.7 ± 3.7	23.8 ± 3.7	24.2 ± 4.1	23.3 ± 4.2	<0.001
Smoking, n (%)	83 (28.3)	1333 (45.9)	513 (52.9)	117 (50.0)	<0.001
Aetiology of chronic HF, n (%)					
Ischaemic heart disease	150 (47.9)	1606 (52.3)	484 (47.5)	96 (38.2)	<0.001
Dilated cardiomyopathy	34 (10.9)	362 (11.8)	165 (16.2)	49 (19.5)	<0.001
Hypertrophic cardiomyopathy	14 (4.5)	89 (2.9)	25 (2.5)	7 (2.8)	0.336
Hypertensive heart disease	51 (16.3)	575 (18.7)	203 (19.9)	60 (23.9)	0.109
Valvular heart disease	37 (11.8)	283 (9.2)	86 (8.4)	28 (11.2)	0.222
Clinical history, n (%)					
Hypertension	265 (84.7)	2745 (89.4)	932 (91.6)	214 (85.3)	0.002
Diabetes mellitus	113 (36.1)	1209 (39.4)	406 (39.9)	102 (40.6)	0.644
Dyslipidaemia	237 (75.7)	2500 (81.4)	851 (83.6)	203 (80.9)	0.024
Atrial fibrillation	107 (34.2)	1194 (38.9)	458 (45.0)	125 (50.0)	<0.001
Stroke	61 (19.5)	623 (20.3)	192 (18.9)	62 (24.7)	0.225
Cancer	49 (15.7)	402 (13.1)	133 (13.1)	33 (13.1)	0.620
HF admission	141 (45.2)	1471 (47.9)	643 (63.2)	193 (76.9)	<0.001
NYHA class I, n (%)	38 (12.2)	295 (9.7)	120 (11.8)	57 (22.7)	<0.001
Previous treatments, n (%)					
PCI	94 (30.0)	1055 (34.4)	283 (27.8)	48 (19.2)	<0.001
CABG	28 (8.9)	279 (9.1)	84 (8.3)	30 (12.0)	0.330
Haemodynamics					
Systolic BP (mmHg)	124.9 ± 19.0	126.9 ± 18.7	125.1 ± 19.1	122.7 ± 22.0	0.001
Diastolic BP (mmHg)	71.1 ± 11.3	72.4 ± 11.7	72.6 ± 12.7	68.9 ± 12.3	<0.001
Heart rate (b.p.m.)	72.1 ± 15.0	71.8 ± 14.4	72.8 ± 15.3	73.7 ± 16.8	0.095
LVEF (%)	58.9 ± 15.4	57.6 ± 15	54.4 ± 15.4	51.6 ± 16.6	<0.001
LVDd (mm)	49.8 ± 8.8	51.6 ± 8.8	53.6 ± 9.9	54.3 ± 10.3	<0.001
Laboratory data					
LDL-C (mg/dL)	105.66 ± 29.96	105.43 ± 29.9	108.29 ± 32.45	113.75 ± 37.78	<0.001
HDL-C (mg/dL)	55 ± 15.84	51.95 ± 15.24	49.6 ± 15.52	48.25 ± 14.99	<0.001
Triglyceride (mg/dL)	90 (67.5, 125)	106 (77, 150)	118 (85, 171)	118 (78, 176.5)	<0.001
Haemoglobin (g/dL)	12.7 ± 1.68	13.27 ± 1.9	13.29 ± 2.07	12.65 ± 2.46	<0.001
Uric acid (mg/dL)	3.18 ± 0.48	5.62 ± 0.89	7.96 ± 0.57	10.31 ± 0.97	<0.001
Creatinine (mg/dL)	0.77 ± 0.37	0.93 ± 0.38	1.16 ± 0.58	1.41 ± 0.76	<0.001
Total protein (g/dL)	7.05 ± 0.63	7.16 ± 0.59	7.19 ± 0.64	7.14 ± 0.74	0.007
Albumin (g/dL)	3.96 ± 0.52	4.09 ± 0.46	4.06 ± 0.5	3.93 ± 0.56	<0.001
HbA1c (%)	6.36 ± 1.17	6.3 ± 0.99	6.27 ± 0.89	6.29 ± 1.01	0.644
BNP (pg/mL)	94.4 (38.6, 193.5)	91.5 (38.3, 212)	130 (48.4, 281)	192.5 (77.4, 424.6)	<0.001
CRP (mg/dL)	0.7 (0.6, 0.9)	0.9 (0.7, 1)	1 (0.8, 1.3)	1.2 (1, 1.6)	<0.001
Medical treatment, n (%)					
ACE-I/ARBs	188 (60.1)	2,217 (72.2)	788 (77.4)	196 (78.1)	<0.001
Beta-blockers	129 (41.2)	1448 (47.2)	584 (57.4)	135 (53.8)	<0.001
Calcium channel blockers	121 (38.7)	1224 (39.9)	389 (38.2)	85 (33.9)	0.259
Diuretics	114 (36.4)	1390 (45.3)	681 (66.9)	224 (89.2)	<0.001
UA lowering drugs	64 (20.4)	538 (17.5)	182 (17.9)	37 (14.7)	0.384
Statins	114 (36.4)	1256 (40.9)	375 (36.8)	55 (21.9)	<0.001

Continuous variables are expressed as mean ± standard deviation, except BNP, CRP levels, and triglyceride, which are expressed as median with interquartile range. ACE-Is, angiotensin-converting enzyme inhibitors; ARBs, angiotensin II receptor blockers; BMI, body mass index; BNP, brain natriuretic peptide; BP, blood pressure; CABG, coronary artery bypass graft; CRP, C-reactive protein; HDL-C, high density lipoprotein cholesterol; HF, heart failure; LDL-C, low density lipoprotein cholesterol; LVDd, left ventricular diastolic dimension; LVEF, left ventricular ejection fraction; NYHA, New York Heart Association; PCI, percutaneous coronary intervention; UA, uric acid.

use, and more impaired renal function, as compared with those aged <70 years (Supporting Information, *Table S1C*).

admission, atrial fibrillation, smoking, BNP, and BMI while negatively related to female sex, statin use, diabetes mellitus, age, and LVDd.

### Clinical factors related to serum uric acid levels

Supporting Information, *Table S2* shows the factors related to serum UA levels in the multivariable regression analysis. Serum UA levels were positively related to serum creatinine levels, use of diuretics, dyslipidaemia, hypertension, HF

### Association of serum uric acid levels with prognosis

During the median follow-up period of 6.3 years, 111 (35%), 905 (29%), 370 (36%), and 139 (55%) patients died, and 79

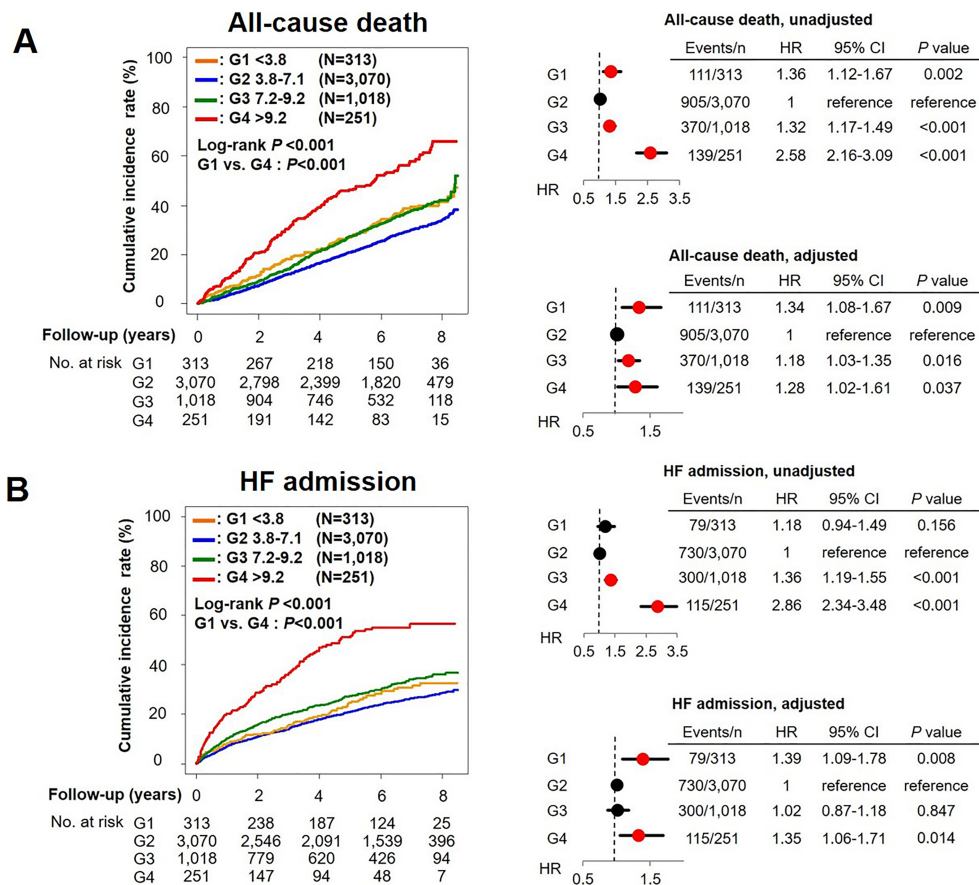
(25%), 729 (24%), 300 (29%), and 115 (46%) experienced HF admission in G1, G2, G3, and G4, respectively (both  $P < 0.001$ ). The Kaplan–Meier curves and the univariable Cox proportional hazards models showed that G4 had higher incidence of both all-cause death and HF admission than other groups [hazard ratio (HR) 2.58, 95% confidence interval (CI) 2.16–3.09,  $P = 0.037$  and HR 2.86, 95% CI 2.34–3.48, both  $P < 0.001$ , respectively] (Figure 2). It was noted that G1 also had higher incidence of all-cause death, but not of HF admission, than G2 (HR 1.36, 95% CI 1.12–1.67,  $P = 0.002$  and HR 1.18, 95% CI 0.94–1.49,  $P = 0.156$ , respectively). The cubic spline model indicated the J-shaped association between serum UA levels with all-cause death and with HF admission (Figure 3). The incidence of all-cause death (G1, 67.5/1000 person-years; G2, 50.2/1000 person-years; G3, 65.9/1000 person-years; and G4, 125.4/1000 person-years) and HF admission (G1, 54.7/1000 person-years; G2, 45.3/1000 person-

years; G3, 62.4/1000 person-years; and G4, 140.3/1000 person-years) also showed the J-shaped association. The J-shaped relationship among the serum UA groups was also noted for both CV and non-CV death, particularly for HF death (G1, 15.2/1000 person-years; G2, 10.4/1000 person-years; G3, 16.7/1000 person-years; and G4, 45.1/1000 person-years) (Figure 4).

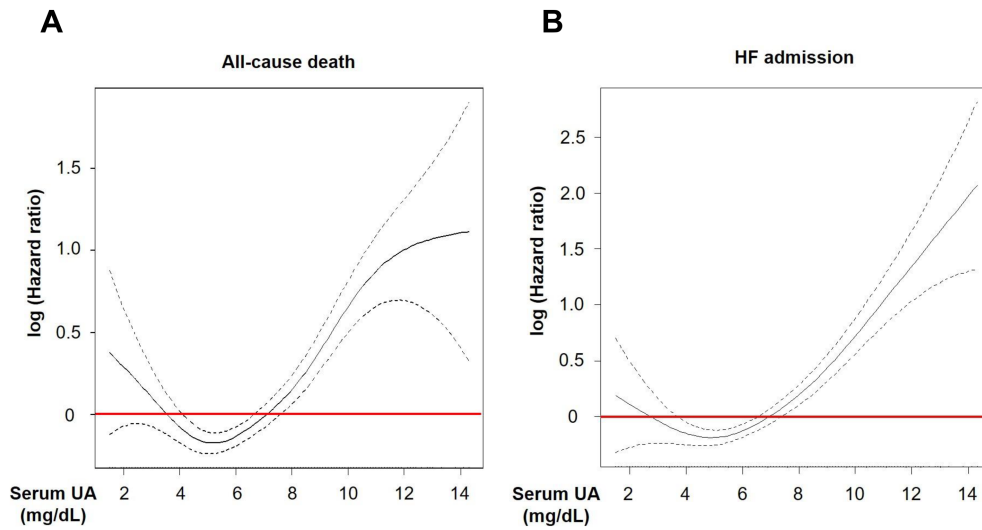
### U-shaped relationship between serum uric acid levels and mortality

The multivariable Cox proportional hazards models adjusted for clinical backgrounds showed that, as compared with G2, G1 patients had increased risk for all-cause death and HF admission (HR 1.34, 95% CI 1.08–1.67,  $P = 0.009$  and HR 1.39, 95% CI 1.09–1.78,  $P = 0.008$ , respectively), which was almost

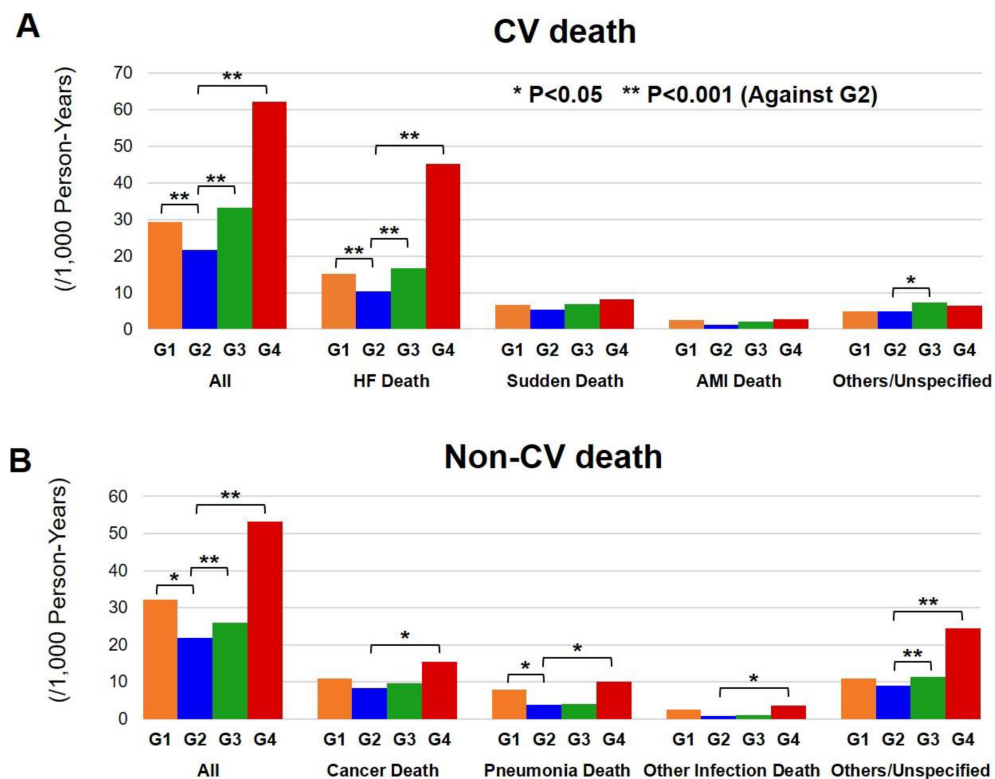
**Figure 2** Kaplan–Meier curves and unadjusted and adjusted hazard ratio by univariable and multivariable Cox proportional regression analysis for (A) all-cause death and (B) HF admission among patients with HF by serum UA levels at baseline. Covariates used in this analysis were age, sex, BMI, heart rate, NYHA III/IV, HF admission, hypertension, diabetes mellitus, atrial fibrillation, stroke, cancer, drinking history, ischaemic heart disease, LVEF, haemoglobin, creatinine, ACE-I/ARBs, beta-blockers, calcium channel blockers, diuretics, statins. ACE-I, angiotensin-converting-enzyme inhibitors; ARBs, angiotensin II receptor blockers, BMI, body mass index; CI, confidence interval; HF, heart failure; HR, hazard ratio; LVEF, left ventricular ejection fraction; NYHA, New York Heart Association.



**Figure 3** Cubic spline curves of additive Cox proportional hazard regression models for (A) All-cause death and (B) HF admission. HF, heart failure; UA, uric acid.



**Figure 4** Comparisons of incidence rates by serum UA levels for (A) CV death and (B) non-CV death. AMI, acute myocardial infarction; CV, cardiovascular; HF, heart failure; UA, uric acid.



comparable with those in G4 (HR 1.28, 95% CI 1.02–1.61,  $P = 0.037$  and HR 1.35, 95% CI 1.06–1.71,  $P = 0.014$ , respectively), indicating the U-shaped relationship rather than the J-shaped one, between serum UA levels and long-term

prognosis (Figure 2). Importantly, subgroup analysis showed that the relationship between serum UA groups and mortality differs by renal function and tended to differ by nutrition status. The U-shaped association was evident in patients without

chronic kidney disease (CKD) but not in those with CKD. Moreover, the U-shaped relationship was evident only for elderly patients aged  $\geq 70$  years (Figure 5). The relationship between serum UA groups and mortality did not differ by sex, LVEF, ischaemic heart disease, use of UA lowering drugs, or use of diuretics (Figure 5).

### Temporal changes in serum uric acid levels and subsequent prognosis

We further examined the prognostic influence of temporal changes in serum UA levels in G2 patients at baseline. As compared with those who remained in G2 at 1 year, those who transitioned to G1 at 1 year were characterized by a higher prevalence of women, stroke, NYHA III/IV, smaller LVDD, and lower frequency of diuretics use (Supporting Information, Tables S3 and S4). In contrast, those who transitioned to G3/G4 at 1 year were characterized by a higher prevalence of men, smoker, stroke, HF admission, NYHA III/IV, larger LVDD, higher creatinine, BNP, higher frequency of ACE-I/ARBs, and diuretics use (Supporting Information, Tables S3 and S4). The multinomial logistic regression analysis showed that female sex and NYHA III/IV were positively associated with transition from G2 to G1 at 1 year, while female sex, haemoglobin, and use of UA lowering drugs were negatively associated, and smoking, BNP, and use of diuretics were positively associated with transition from G2 to G3/G4 at 1 year (Supporting Information, Table S5). As compared with remaining in G2, transitions to G1 and G3/G4 at 1 year follow-up were associated with increased risk of the endpoint, indicating the U-shaped relationship in the absence of UA lowering drugs. However, the multivariable Cox proportional hazards models showed that only decrease, but not increase, in serum UA levels in the absence of UA lowering drugs was associated with increased mortality (Figure 6).

## Discussion

In the present study, we examined the clinical outcomes of patients with CHF among the groups divided by serum UA levels in the CHART-2 study, the large-scale, prospective, and observational study for HF in Japan. The results clearly demonstrated that both low and high serum UA levels were significantly associated with poor prognosis in patients with CHF, indicating the U-shaped association between serum UA levels and long-term prognosis.

### Clinical backgrounds associated with serum uric acid levels

In the general population, many epidemiological studies have shown that hyperuricaemia is a clinically important

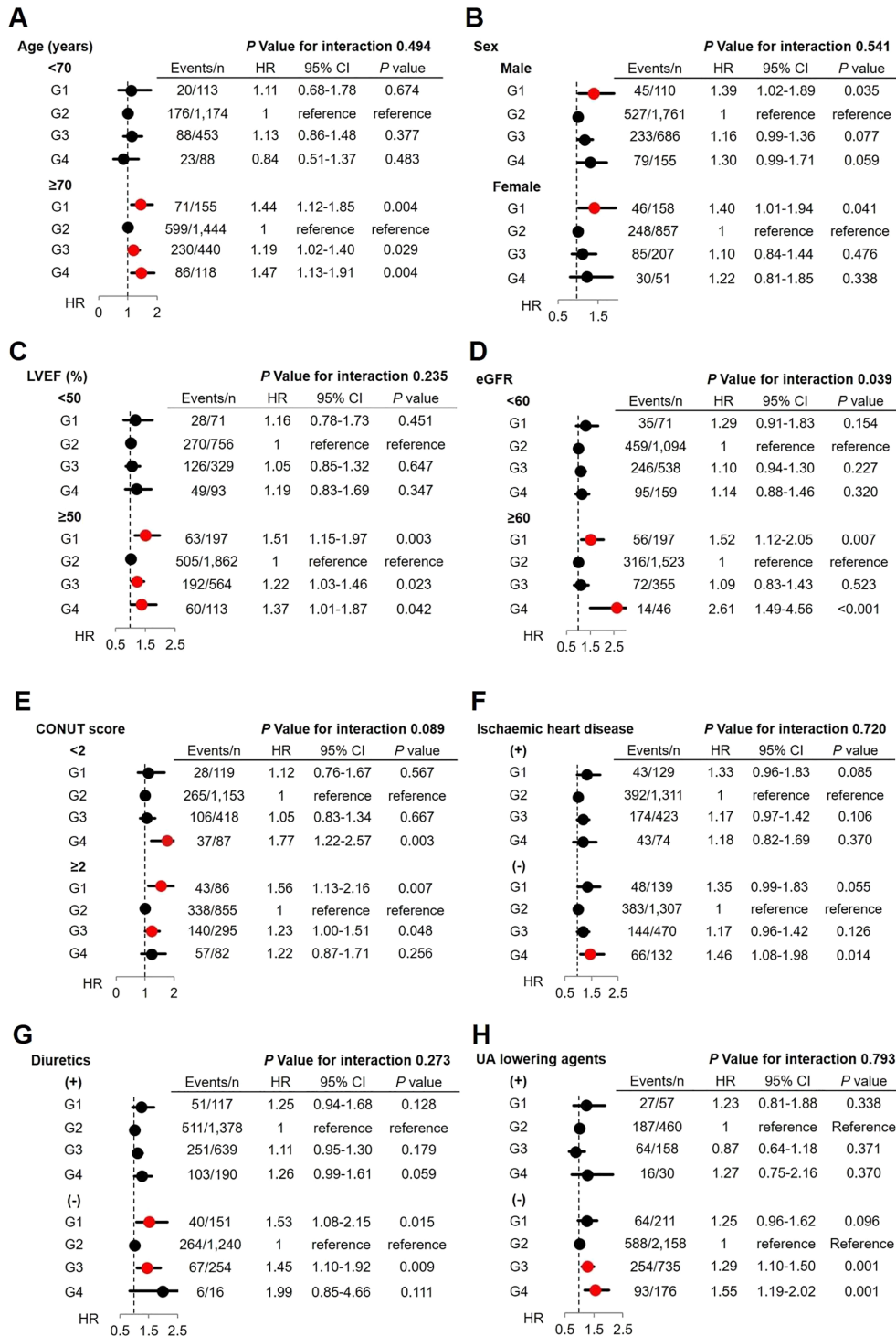
risk factor of lifestyle-related diseases.<sup>1–9,26</sup> Factors related to hyperuricaemia include hypertension,<sup>27</sup> CKD,<sup>28</sup> cerebrocardiovascular disease,<sup>29</sup> metabolic syndrome,<sup>30</sup> and use of diuretics.<sup>31</sup> Of note, diuretic use is a clinically important factor to induce hyperuricaemia via increasing UA reabsorption and decreasing UA secretion.<sup>32</sup> In addition, it has been recently reported that HF is related to hyperuricaemia.<sup>31,33</sup> Hypoxaemia due to HF has been reported to increase xanthine oxidase activity in cardiomyocytes and endothelial cells, resulting in increased oxidative stress and cardiac and endothelial dysfunctions, resulting in deterioration of HF.<sup>14,34</sup> However, the detailed mechanisms of hyperuricaemia in patients with HF remain to be elucidated. In the present study, patients with high serum UA levels were characterized by male sex, dyslipidemia, DCM, atrial fibrillation, history of HF admission, use of diuretics, low LVEF, and large left ventricle, indicating that high UA level is, at least in part, associated with severe clinical status of lifestyle-related diseases.

It has been reported that decreased UA production or decreased renal tubular reabsorption due to inherited or acquired disorders may cause hypouricaemia.<sup>35</sup> However, the mechanisms of hypouricaemia also remain to be elucidated, especially in patients with HF. In the present study, patients with low serum UA levels were characterized by older age, women, low BMI, non-smokers, use of statins, and diabetes. Among them, diabetes mellitus may play an important role to reduce UA levels, because (i) higher serum UA levels were inversely associated with diabetes mellitus in the general population<sup>36</sup> and (ii) high glucose levels inhibit UA reabsorption in the proximal tubule in diabetic patients.<sup>37</sup> In addition, genetic backgrounds may cause hypouricaemia. For example, genetic abnormalities in urate transporter 1<sup>38</sup> and glucose transporter 9<sup>39</sup> have been reported to cause hypouricaemia in humans.

### Serum uric acid levels and long-term prognosis of patients with heart failure

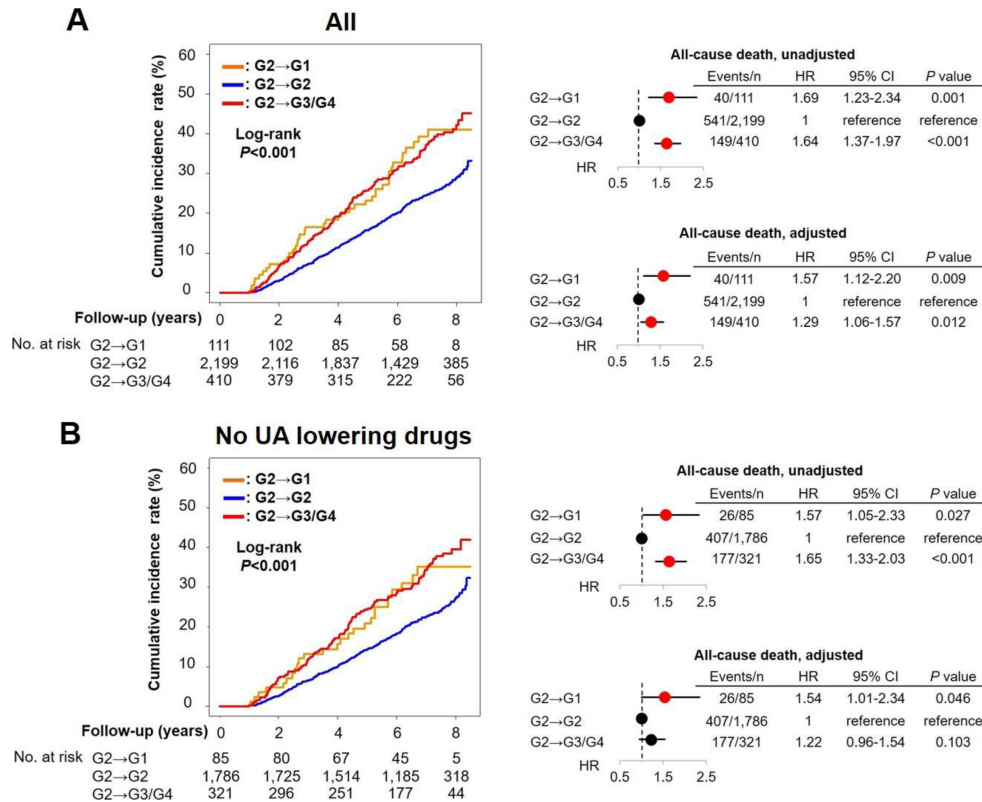
One of the novel findings of the present study is that not only high but also low serum UA levels were associated with increased incidence of all-cause death and HF admission in patients with CHF. Although a recent study showed the U-shaped association between the whole range levels of serum UA and prognosis in the general population,<sup>2</sup> it remains unclear whether this is also the case in patients with HF, because the previous studies just showed the association between high UA levels and poor prognosis in patients with HF.<sup>13,14,40,41</sup> However, these studies compared prognosis among patients with HF divided by tertile, quartile, or arbitrarily determined UA cut-off values<sup>13,14,40,41</sup> and thus might have overlooked negative prognostic impacts of low UA levels, because the proportion of patients with HF who had

**Figure 5** Subgroup analysis with multivariable Cox proportional regression models for the prognostic relevance of serum UA levels with all-cause death by (A) age, (B) sex, (C) LVEF, (D) eGFR in patients with HF, (E) CONUT score < 2 or ≥ 2, (F) ischaemic heart disease, (G) use of diuretics, and (H) use of UA lowering agents. CI, confidence interval; CONUT, controlling nutritional status; eGFR, estimated glomerular filtration rate; HF, heart failure; HR, hazard ratio; LVEF, left ventricular ejection fraction; UA, uric acid.





**Figure 6** Kaplan–Meier curves and forest plots in multivariable Cox proportional hazards models for cumulative all-cause death in G2 patients at baseline with serum UA levels both at baseline and 1 year for (A) overall population and (B) subpopulation with use of UA lowering drugs at neither baseline nor 1 year. HF, heart failure; HR, hazard ratio; UA, uric acid.



low UA and poor prognosis could be very small. Indeed, even in our study cohort, we were not able to find any prognostic impact of lower serum UA group when we divided patients with HF by the tertiles or quartiles (data not shown), possibly because the proportion of our lowest UA group with poor prognosis, determined by survival CART (G1, <3.8 mg/dL), was only 6.7% (313 out of 4652 patients), which was much smaller than one third or one quarter. Thus, we may consider that the use of survival CART enabled us to discern a small proportion of patients with HF who had both low serum UA levels and poor prognosis and firstly reveal the U-shaped relationship between serum UA levels and prognosis in HF population. It is also noteworthy that, even among the patients with intermediate serum UA levels, a subsequent decrease in serum UA levels was associated with poor prognosis in the present study. This finding underlines the prognostic impact of low or decreasing UA levels and thus is of clinical significance. Indeed, no studies have examined the association between transition of serum UA levels and long-term prognosis, although one study examined the relationship between 1 year changes in serum UA levels and related parameters and medical conditions.<sup>42</sup>

The mechanisms of the relation between low UA levels and poor prognosis in patients with HF remain to be elucidated. In

the present study, low serum UA levels were characterized by many of negative prognostic factors, including older age, low BMI, and diabetes mellitus, all of which are negative prognostic factors in patients with HF in the CHART-2 study.<sup>18,20,43</sup> Thus, it is conceivable that the clinical conditions causing low UA levels, but not the low serum UA levels themselves, result in poor prognosis in patients with HF in the present study. On the other hand, possible direct role of hypouricaemia in patients with HF still remains to be elucidated. It has been reported that serum UA levels have a potent antioxidant activity in humans<sup>44,45</sup> and that acute and marked decrease in UA levels in healthy male subjects with oral febuxostat or intravenous rasburicase alters endothelium-dependent microvascular vasodilation and markedly reduces myeloperoxidase activity as compared with moderate UA reduction.<sup>46</sup> Furthermore, extremely low levels of serum UA caused by genetic mutations could also induce endothelial dysfunction.<sup>47</sup> These lines of evidence suggest the clinical importance to manage hypouricaemia, and thus, clinical studies to intervene hypouricaemia are warranted. Furthermore, monitoring serum UA levels after prescribing UA lowering drugs appears to be important because excessive reduction of serum UA by UA lowering drugs could have adverse effects.<sup>48</sup>

The present study also demonstrates that the prognosis of patients with HF whose serum UA levels were decreased from baseline to 1 year was poor even in the absence of UA lowering drugs use and that female sex and NYHA III/IV clinical symptoms were related with the temporal decrease in serum UA level. Thus, further studies are warranted to investigate how we should manage patients with these characteristics.

### Subgroup analyses

Regarding the prognostic relationship, serum UA levels had significant interactions with age. We found that patients aged  $\geq 70$  years, but not those aged  $< 70$  years, had a U-shaped relationship between serum UA and mortality. This finding is clinically important because in the present study, the U-shaped relationship in the elderly patients with CHF was shown for the first time. In the general population, it has been reported that malnourished older people had lower serum UA levels as compared with the healthy elderly<sup>49</sup> and that low UA levels predicted higher all-cause and CV disease-related mortality in the elderly, particularly in those with malnourishment.<sup>3</sup> Indeed, the relationship between serum UA groups and mortality tended to differ by nutrition status in the present study. Considering the lack of relationship between serum UA levels and prognosis in patients aged  $< 65$  years, management of aging-related factors may prevent hypouricaemia and subsequently improve prognosis of patients with HF.

The present study also showed that serum UA levels had significant prognostic interactions with renal function: the U-shaped relationship between serum UA levels and prognosis was evident in patients with HF without CKD but not in those with CKD. Unlike hypouricaemia, it has been reported that hyperuricaemia has a consistent association with poor prognosis in patients without CKD.<sup>12,14</sup> Indeed, patients without CKD have normal UA excretion and thus are easily prone to increased UA production, resulting in hyperuricaemia via increased xanthine oxidase activity.<sup>12</sup> However, it is unclear why renal dysfunction is associated with a lack of prognostic significance of serum UA levels in the present study. It was noted that the use of diuretics did not interact with the relationship between serum UA levels and prognosis, although diuretic use could often increase serum UA levels and worsen renal function.<sup>32</sup>

Sex difference may be an important issue when considering the relationship between serum UA levels and prognosis although we found no prognostic impact of sex difference in the present study. It was reported that risk of congestive HF is gradually increased with increase in serum UA levels in men but not in women in the general population.<sup>50</sup> In addition, it was reported that high serum UA levels were an independent predictor of mortality in women but not in men.<sup>40</sup>

Thus, this issue remains to be further examined in future studies.

### Study limitations

Several limitations should be mentioned for the present study. First, because the CHART-2 study is an observational study for CHF in Japan, there needs a caution when generalizing the present findings to other populations in different countries and/or populations. In particular, because the CHART-2 study enrolled stable CHF population, validation studies are warranted in patients with acute HF or those with CHF in more severe clinical conditions. Second, the sample size in our study might not have enough statistical power to evaluate the association between UA lowering drugs and prognosis in patients with HF. Lastly, the pathophysiology of hypouricaemia including hereditary factors was not examined in the present study.

### Conclusions

The present study demonstrates that serum UA levels have the U-shaped prognostic effects, and both temporal transitions to abnormally lower or higher levels are also associated with poor prognosis in the elderly patients with HF.

### Acknowledgements

We thank all the members of the Tohoku Heart Failure Association, the CHART-2 Investigators, and the staff of the Departments of Cardiovascular Medicine and Evidence-Based Cardiovascular Medicine, Tohoku University Graduate School of Medicine for their contributions (Supporting Information).

### Conflict of interest

The Department of Evidence-Based Cardiovascular Medicine, Tohoku University Graduate School of Medicine is supported in part by unrestricted research grants from Daiichi Sankyo (Tokyo, Japan), Bayer Yakuin (Osaka, Japan), Kyowa Hakko Kirin (Tokyo, Japan), Novartis Pharma (Tokyo, Japan), Dainippon Sumitomo Pharma (Osaka, Japan), Astellas Pharma (Tokyo, Japan), AstraZeneca (Osaka, Japan), Chugai Pharmaceutical (Tokyo, Japan), GlaxoSmithKline (Tokyo, Japan), Kowa Pharmaceutical (Tokyo, Japan), Mitsubishi Tanabe Pharma (Osaka, Japan), Mochida Pharmaceutical (Tokyo, Japan), MSD (Tokyo, Japan), Nippon Boehringer Ingelheim (Tokyo, Japan), Otsuka Pharmaceutical (Tokyo, Japan), Shionogi (Osaka, Japan), and Takeda Pharmaceutical (Osaka, Japan).

H. S. has received lecture fees from Bayer Yakuhin (Osaka, Japan) and Daiichi Sankyo (Tokyo, Japan).

## Funding

This study was supported in part by the Grants-in Aid from the Japanese Ministry of Health, Labour, and Welfare and the Japanese Ministry of Education, Culture, Sports, Science, and Technology and the Agency for Medical Research and Development (15ek0210043h0001, 16ek0210056h0001, and 16ek0210043h0002), Tokyo, Japan.

## Supporting information

Additional supporting information may be found online in the Supporting Information section at the end of the article.

## References

1. Wu AH, Gladden JD, Ahmed M, Ahmed A, Filippatos G. Relation of serum uric acid to cardiovascular disease. *Int J Cardiol* 2016; **213**: 4–7.
2. Cho SK, Chang Y, Kim I, Ryu S. U-shaped association between serum uric acid level and risk of mortality: a cohort study. *Arthritis Rheumatol* 2018; **70**: 1122–1132.
3. Tseng WC, Chen YT, Ou SM, Shih CJ, Tarng DC, Taiwan Geriatric Kidney Disease Research Group. U-shaped association between serum uric acid levels with cardiovascular and all-cause mortality in the elderly: the role of malnourishment. *J Am Heart Assoc* 2018; **7**: e007523.
4. Verdecchia P, Schillaci G, Reboldi G, Santeusano F, Porcellati C, Brunetti P. Relation between serum uric acid and risk of cardiovascular disease in essential hypertension: the PIUMA study. *Hypertension* 2000; **36**: 1072–1078.
5. Mazza A, Zamboni S, Rizzato E, Pessina AC, Tikhonoff V, Schiavon L, Casiglia E. Serum uric acid shows a J-shaped trend with coronary mortality in non-insulin-dependent diabetic elderly people. The CARDIOvascular STUDY in the ELderly (CASTEL). *Acta Diabetol* 2007; **44**: 99–105.
6. Hsu SP. Serum uric acid levels show a 'J-shaped' association with all-cause mortality in haemodialysis patients. *Nephrol Dial Transplant* 2004; **19**: 457–462.
7. Culleton BF, Larson MG, Kannel WB, Levy D. Serum uric acid and risk for cardiovascular disease and death: the Framingham heart study. *Ann Intern Med* 1999; **131**: 7–13.
8. Feig DI, Kang DH, Johnson RJ. Uric acid and cardiovascular risk. *N Engl J Med* 2008; **359**: 1811–1821.
9. Kim SY, Guevara JP, Kim KM, Choi HK, Heitjan DF, Albert DA. Hyperuricemia and coronary heart disease: a systematic review and meta-analysis. *Arthritis Care Res (Hoboken)* 2010; **62**: 170–180.
10. Shimokawa H, Miura M, Nochioka K, Sakata Y. Heart failure as a general pandemic in Asia. *Eur J Heart Fail* 2015; **17**: 884–892.
11. Steinberg BA, Zhao X, Heidenreich PA, Peterson ED, Bhatt DL, Cannon CP, Hernandez AF, Fonarow GC. Trends in patients hospitalized with heart failure and preserved left ventricular ejection fraction. *Circulation* 2012; **126**: 65–75.
12. Filippatos GS, Ahmed MI, Gladden JD, Mujib M, Aban IB, Love TE, Sanders PW, Pitt B, Anker SD, Ahmed A. Hyperuricaemia, chronic kidney disease, and outcomes in heart failure: potential mechanistic insights from epidemiological data. *Eur Heart J* 2011; **32**: 712–720.
13. Hamaguchi S, Furumoto T, Tsuchihashi-Makaya M, Goto K, Goto D, Yokota T, Kinugawa S, Yokoshiki H, Takeshita A, Tsutsui H. Hyperuricemia predicts adverse outcomes in patients with heart failure. *Int J Cardiol* 2011; **151**: 143–147.
14. Mantovani A, Targher G, Temporelli PL, Lucci D, Gonzini L, Nicolosi GL, Marchioli R, Tognoni G, Latini R, Cosmi F, Tavazzi L, Maggioni AP, Investigators G-H. Prognostic impact of elevated serum uric acid levels on long-term outcomes in patients with chronic heart failure: a post-hoc analysis of the GISSI-HF (Gruppo Italiano per lo Studio della Sopravvivenza nella Insufficienza Cardiaca-Heart Failure) trial. *Metabolism* 2018; **83**: 205–215.
15. Tamariz L, Harzand A, Palacio A, Verma S, Jones J, Hare J. Uric acid as a predictor of all-cause mortality in heart failure: a meta-analysis. *Congest Heart Fail* 2011-Feb; **17**: 25–30.
16. Duan X, Ling F. Is uric acid itself a player or a bystander in the pathophysiology of chronic heart failure? *Med Hypotheses* 2008; **70**: 578–581.
17. Tsuji K, Sakata Y, Nochioka K, Miura M, Yamauchi T, Onose T, Abe R, Oikawa T, Kasahara S, Sato M, Shiroto T, Takahashi J, Miyata S, Shimokawa H. Investigators C-. Characterization of heart failure patients with mid-range left ventricular ejection fraction—a report from the CHART-2 Study. *Eur J Heart Fail* 2017; **19**: 1258–1269.
18. Ushigome R, Sakata Y, Nochioka K, Miyata S, Miura M, Tadaki S, Yamauchi T, Sato K, Onose T, Tsuji K, Abe R, Oikawa T, Kasahara S, Takahashi J, Shimokawa H. Investigators C-. Temporal trends in clinical characteristics, management and prognosis of patients with symptomatic heart failure in Japan—report from the CHART Studies. *Circ J* 2015; **79**: 2396–2407.
19. Miura M, Sugimura K, Sakata Y, Miyata S, Tadaki S, Yamauchi T, Onose T, Tsuji K, Abe R, Oikawa T, Kasahara S, Nochioka K, Takahashi J, Shimokawa H. Investigators C-. Prognostic impact of loop diuretics in patients with chronic heart failure—effects of addition of

- renin-angiotensin-aldosterone system inhibitors and beta-blockers. *Circ J* 2016; **80**: 1396–1403.
20. Shiba N, Nochioka K, Miura M, Kohno H, Shimokawa H. Trend of westernization of etiology and clinical characteristics of heart failure patients in Japan. *Circ J* 2011; **75**: 823–833.
  21. McKee PA, Castelli WP, McNamara PM, Kannel WB. The natural history of congestive heart failure: the Framingham study. *N Engl J Med* 1971; **285**: 1441–1446.
  22. Hunt SA, Abraham WT, Chin MH, Feldman AM, Francis GS, Ganiats TG, Jessup M, Konstam MA, Mancini DM, Michl K, Oates JA, Rahko PS, Silver MA, Stevenson LW, Yancy CW, American College of Cardiology F, American Heart A. 2009 Focused update incorporated into the ACC/AHA 2005 guidelines for the diagnosis and management of heart failure in adults: a report of the American College of Cardiology Foundation/American Heart Association Task Force on Practice Guidelines Developed in Collaboration With the International Society for Heart and Lung Transplantation. *J Am Coll Cardiol* 2009; **53**: e1–e90.
  23. Guideline for the Management of Hyperuricemia and Gout Drafting Committee, ed. *Guideline for the management of hyperuricemia and gout*. Tokyo: Japanese Society of Gout and Nucleic Acid Metabolism; 2002.
  24. Breiman L, Friedman J, Olshen R, Stone C. *Classification and regression trees*. Belmont, California: Wadsworth; 1984.
  25. Bou-Hamad I, Larocque D, Ben-Ameur H. A review of survival trees. *Stat Surv* 2011; **5**: 44–71.
  26. Dobson A. Is raised serum uric acid a cause of cardiovascular disease or death? *Lancet* 1999; **354**: 1578.
  27. Grayson PC, Kim SY, LaValley M, Choi HK. Hyperuricemia and incident hypertension: a systematic review and meta-analysis. *Arthritis Care Res (Hoboken)* 2011; **63**: 102–110.
  28. Zhu P, Liu Y, Han L, Xu G, Ran JM. Serum uric acid is associated with incident chronic kidney disease in middle-aged populations: a meta-analysis of 15 cohort studies. *PLoS ONE* 2014; **9**: e100801.
  29. Li M, Hu X, Fan Y, Li K, Zhang X, Hou W, Tang Z. Hyperuricemia and the risk for coronary heart disease morbidity and mortality: a systematic review and dose-response meta-analysis. *Sci Rep* 2016; **6**: 19520.
  30. Yuan H, Yu C, Li X, Sun L, Zhu X, Zhao C, Zhang Z, Yang Z. Serum uric acid levels and risk of metabolic syndrome: a dose-response meta-analysis of prospective studies. *J Clin Endocrinol Metab* 2015; **100**: 4198–4207.
  31. Kaufman M, Guglin M. Uric acid in heart failure: a biomarker or therapeutic target? *Heart Fail Rev* 2013; **18**: 177–186.
  32. Pascual E, Perdiguer M. Gout, diuretics and the kidney. *Ann Rheum Dis* 2006; **65**: 981–982.
  33. Huang H, Huang B, Li Y, Huang Y, Li J, Yao H, Jing X, Chen J, Wang J. Uric acid and risk of heart failure: a systematic review and meta-analysis. *Eur J Heart Fail* 2014; **16**: 15–24.
  34. Harzand A, Tamariz L, Hare JM. Uric acid, heart failure survival, and the impact of xanthine oxidase inhibition. *Congest Heart Fail* 2012-Jun; **18**: 179–182.
  35. Maesaka JK, Fishbane S. Regulation of renal urate excretion: a critical review. *Am J Kidney Dis* 1998; **32**: 917–933.
  36. Bandaru P, Shankar A. Association between serum uric acid levels and diabetes mellitus. *Int J Endocrinol* 2011; **2011**: 604715.
  37. Tuomilehto J, Zimmet P, Wolf E, Taylor R, Ram P, King H. Plasma uric acid level and its association with diabetes mellitus and some biologic parameters in a biracial population of Fiji. *Am J Epidemiol* 1988; **127**: 321–336.
  38. Enomoto A, Kimura H, Chairoungdua A, Shigeta Y, Jutabha P, Cha SH, Hosoyamada M, Takeda M, Sekine T, Igarashi T, Matsuo H, Kikuchi Y, Oda T, Ichida K, Hosoya T, Shimokata K, Niwa T, Kanai Y. H E. Molecular identification of a renal urate anion exchanger that regulates blood urate levels. *Nature* 2002; **417**: 447–452.
  39. Matsuo H, Chiba T, Nagamori S, Nakayama A, Domoto H, Phetdee K, Wiriyaerkmul P, Kikuchi Y, Oda T, Nishiyama J, Nakamura T, Morimoto Y, Kamakura K, Sakurai Y, Nonoyama S, Kanai Y, Shinomiya N. Mutations in glucose transporter 9 gene SLC2A9 cause renal hypouricemia. *Am J Hum Genet* 2008; **83**: 744–751.
  40. Stubnova V, Os I, Hoiegggen A, Solbu MD, Grundtvig M, Westheim AS, Atar D, Waldum-Grevbo B. Gender differences in association between uric acid and all-cause mortality in patients with chronic heart failure. *BMC Cardiovasc Disord* 2019; **19**: 4.
  41. Alimonda AL, Nunez J, Nunez E, Husser O, Sanchis J, Bodi V, Minana G, Robles R, Mainar L, Merlos P, Darmofal H, Llacer A. Hyperuricemia in acute heart failure. More than a simple spectator? *Eur J Intern Med* 2009; **20**: 74–79.
  42. Choe JY, Park SH, Kim JY, Shin IH, Kim SK. Change in serum uric acid between baseline and 1-year follow-up and its associated factors in male subjects. *Clin Rheumatol* 2008; **27**: 483–489.
  43. Nochioka K, Shiba N, Kohno H, Miura M, Shimokawa H. Both high and low body mass indexes are prognostic risks in Japanese patients with chronic heart failure: implications from the CHART study. *J Card Fail* 2010; **16**: 880–887.
  44. Maxwell S, Thomason H, Sandler D, Leguen C, Baxter M, Thorpe G, Jones A, Barnett A. Antioxidant status in patients with uncomplicated insulin-dependent and non-insulin-dependent diabetes mellitus. *Eur J Clin Invest* 1997; **27**: 484–490.
  45. Ames B, Cathcart R, Schwiers E, Hochstein P. Uric acid provides an antioxidant defense in humans against oxidant- and radical-caused aging and cancer: a hypothesis. *Proc Natl Acad Sci U S A* 1981; **78**: 6858–6862.
  46. De Becker B, Coremans C, Chaumont M, Delporte C, Van Antwerpen P, Franck T, Rousseau A, Zouaoui Boudjeltia K, Cullus P, van de Borne P. Severe hypouricemia impairs endothelium-dependent vasodilatation and reduces blood pressure in healthy young men: a randomized, placebo-controlled, and crossover study. *J Am Heart Assoc* 2019; **8**: e013130.
  47. Sugihara S, Hisatome I, Kuwabara M, Niwa K, Maharani N, Kato M, Ogino K, Hamada T, Thinomiya H, Higashi Y, Ichida K, Yamamoto K. Depletion of uric acid due to SLC22A12 (URAT1) loss-of-function mutation causes endothelial dysfunction in hypouricemia. *Circ J* 2015; **79**: 1125–1132.
  48. Alvarez-Lario B, MacArron-Vicente J. Is there anything good in uric acid? *Qjm* 2011; **104**: 1015–1024.
  49. Saghafi-Asl M, Vaghef-Mehrabany E. Comprehensive comparison of malnutrition and its associated factors between nursing home and community dwelling elderly: a case-control study from Northwestern Iran. *Clin Nutr ESPEN* 2017; **21**: 51–58.
  50. Holme I, Aastveit AH, Hammar N, Jungner I, Walldius G. Uric acid and risk of myocardial infarction, stroke and congestive heart failure in 417,734 men and women in the APOlipoprotein MOrtality RiSk study (AMORIS). *J Intern Med* 2009; **266**: 558–570.