



Contents lists available at ScienceDirect

International Journal of Cardiology

journal homepage: www.elsevier.com/locate/ijcard

Clinical characteristics and long-term prognosis of contemporary patients with vasospastic angina Ethnic differences detected in an international comparative study

Koichi Sato^a, Jun Takahashi^a, Yuji Odaka^a, Akira Suda^a, Shozo Sueda^b, Hiroki Teragawa^c, Katsuhisa Ishii^d, Takahiko Kiyooka^e, Atsushi Hirayama^f, Tetsuya Sumiyoshi^g, Yasuhiko Tanabe^h, Kazuo Kimuraⁱ, Koichi Kaikita^j, Peter Ong^k, Udo Sechtem^k, Paolo G. Camici^l, Juan Carlos Kaski^m, Filippo Creaⁿ, John F. Beltrame^o, Hiroaki Shimokawa^{a,*}, on behalf of the Japanese Coronary Spasm Association

^a Department of Cardiovascular Medicine, Tohoku University Graduate School of Medicine, Sendai, Japan

^b Ehime Prefectural Niihama Hospital, Niihama, Japan

^c JR Hiroshima Hospital, Hiroshima, Japan

^d Kansai Electric Power Hospital, Osaka, Japan

^e Tokai University Oiso Hospital, Oiso, Japan

^f Osaka Police Hospital, Osaka, Japan

^g Sakakibara Heart Institute, Tokyo, Japan

^h Niigata Prefectural Shibata Hospital, Shibata, Japan

ⁱ Yokohama City University Medical Center, Yokohama, Japan

^j Kumamoto University Hospital, Kumamoto, Japan

^k Robert-Bosch-Krankenhaus, Stuttgart, Germany

^l Vita Salute University and San Raffaele Hospital, Milan, Italy

^m St George's University of London, London, UK

ⁿ Catholic University of the Sacred Heart, Rome, Italy

^o University of Adelaide, Adelaide, Australia

ARTICLE INFO

Article history:

Received 9 November 2018

Received in revised form 27 December 2018

Accepted 18 February 2019

Available online xxx

Keywords:

Vasospastic angina

Coronary spasm

Ethnic difference

Clinical characteristics

International cohort study

ABSTRACT

Background: Possible ethnic differences in clinical characteristics and long-term prognosis of contemporary patients with vasospastic angina (VSA) remain to be elucidated.

Methods and results: The Japanese Coronary Spasm Association (JCSA) conducted an international, prospective, and multicenter registry study for VSA patients. A total of 1457 VSA patients (Japanese/Caucasians, 1339/118) were enrolled based on the same diagnostic criteria. Compared with Caucasian patients, Japanese patients were characterized by higher proportions of males (68 vs. 51%) and smoking history (60 vs. 49%). Japanese patients more often had angina especially during the night and early morning hours, compared with Caucasians. Ninety-five percent of Japanese and 84% of Caucasian patients underwent pharmacological provocation test. Importantly, no significant differences in the patterns of coronary spasm were apparent, with diffuse spasm most frequently noted in both ethnicities. The prescription rate of calcium-channel blockers was higher in Japanese (96 vs. 86%), whereas the uses of nitrates (46 vs. 59%), statins (43 vs. 65%), renin-angiotensin-system inhibitors (27 vs. 51%), and β -blockers (10 vs. 24%) were more common in Caucasian patients. Survival rate free from major adverse cardiac events (MACE) was slightly but significantly higher in Japanese than in Caucasians (86.7 vs. 76.6% at 5 years, $P < 0.001$). Notably, multivariable analysis revealed that the JCSA risk score correlated with MACE rates not only in Japanese but also in Caucasian patients.

Conclusion: These results indicate that there are ethnic differences in clinical profiles and long-term prognosis of contemporary VSA patients.

© 2019 Elsevier B.V. All rights reserved.

1. Introduction

Vasospastic angina (VSA) plays an important role in the pathogenesis of ischemic heart disease [1–3]. Since the first report of ‘variant angina’ by Prinzmetal et al. in 1959 [4], much has been learned

* Corresponding author at: Department of Cardiovascular Medicine, Tohoku University Graduate School of Medicine, 1-1, Seiryō-machi, Aoba-ku, Sendai 980-8574, Japan.

E-mail address: shimo@cardio.med.tohoku.ac.jp (H. Shimokawa).

regarding pathophysiology, diagnosis and treatment of VSA, where Japan has made significantly contributions, leading to the Guidelines for Diagnosis and Treatment of Patients with Vasospastic Angina by the Japanese Circulation Society [5]. Indeed, the guidelines proposed by the Society defined for the first time the standards for the management of VSA based on currently available evidence, including the latest findings by the Japanese Coronary Spasm Association (JCSA) [6–9]. Furthermore, the Coronary Vasomotion Disorders International Study Group (COVADIS) has recently proposed diagnostic criteria for VSA to improve clinical diagnosis and facilitate research on the disorder [10].

Although it has long been suggested that the prevalence of VSA is lower in Caucasians than in Asians [11], recent studies demonstrated that the prevalence of coronary artery spasm in Caucasians may be higher than previously thought [12,13]. Moreover, early studies suggested ethnic differences in the clinical characteristics and long-term prognosis of VSA patients between Japanese and Caucasians [10,14]. However, whether these differences are present in contemporary VSA patients remains to be elucidated. To address these important clinical issues, the JCSA conducted an international, prospective, and multicenter registry study of VSA patients [10]. The objective of the present study was to compare baseline clinical characteristics and 5-year major adverse cardiac events (MACE) between Japanese and Caucasian patients with VSA.

2. Methods

JCSA conducted this multi-center, multi-national, observational, prospective, longitudinal cohort study of patients with VSA (UMIN00003304). This study was performed in accordance with the Declaration of Helsinki ethical principles, and the protocol was approved by the institutional review boards and/or ethics committees of all participating centers. Informed consent was obtained from all patients at the participating hospitals.

2.1. Study populations

This prospective study included consecutive patients first diagnosed with VSA after January 2010. From January 2010 to December 2014, a total of 1661 VSA patients (Japanese, 1460 and Caucasians, 201) were enrolled from 42 participating hospitals. Of those, 204 were excluded for lack of follow-up data, and the final study population consists of 1457 patients (Japanese/Caucasians, 1339/118).

2.2. Diagnosis of VSA

The diagnosis of VSA was made based on the Guidelines of the Japanese Circulation Society [5], which subsequently was incorporated into the international criteria proposed by COVADIS in 2017 [10]. The diagnosis of 'definite' VSA was made when either spontaneous and/or pharmacologically induced coronary spasm was documented [5], and only patients with 'definite' VSA were enrolled in the present study. The definition of spontaneous VSA attacks was based on the occurrence of chest pain at rest and/or on effort with accompanying transient ischemic ECG changes (ST-segment elevation/depression >0.1 mV or the new appearance of negative U waves) that promptly responded to the administration of short-acting nitrates [5,10]. When ischemic ECG changes during a spontaneous angina episode could not be documented or they were equivocal, spasm provocation tests were performed. Pharmacological provocation testing involved the intracoronary administration of acetylcholine (ACh) or ergonovine (ER) during coronary angiography in accordance with the JCS guidelines [5]. The selection of the provocative agent and the decision as to whether the left coronary artery (LCA) or right coronary artery (RCA) was assessed first, were left to the discretion of the local clinician. The provocation test was performed after a washout period of at least 24 h for calcium channel blockers (CCBs) and nitrates [5]. A positive provocation test was defined as a total or subtotal (>90%) coronary artery narrowing accompanied by chest pain and/or ischemic ECG changes [5,10]. Types of coronary spasm observed during spasm provocation test were classified into focal, diffuse, and mixed types as previously described [8].

2.3. Data collection

The patient de-identified demographic and clinical data were stored in a central database system. Hypertension, dyslipidemia, and diabetes mellitus were diagnosed based on the guidelines of the Japanese Society of Hypertension, Japan Atherosclerosis Society, and Japan Diabetes Society, respectively [15–17]. Significant coronary stenosis was defined as ≥70% of luminal narrowing of major coronary arteries evaluated by coronary angiography after intracoronary nitrate administration. Ventricular tachycardia (VT) was defined as 3 or more consecutive premature ventricular contractions (PVCs). Atrioventricular (AV) block consisted of second- and third-degree AV blocks and bradycardia was defined as sinus rhythm <50 beats/min. Out-of-hospital cardiac arrest (OHCA) was defined as cessation of cardiac mechanical activity as confirmed by the absence of signs of circulation.

Complications during spasm provocative testing included death, Q wave MI, non-Q wave MI, coronary perforation, temporary hypotension, electrical storm (VT/VF storm), cardiac tamponade, heart failure, and stroke. The JCSA risk score, which provide a comprehensive risk assessment and prognostic stratification for VSA patients, consists of 7 predictive factors of major adverse cardiac events (MACE), including history of OHCA (4 points), smoking, angina at rest alone, significant organic coronary stenosis, multivessel spasm (2 points each), and ST-segment elevation during an attack and beta-blocker use (1 point each) [9]. The risk score was calculated based on the sum of weighted predictors in the individual patient.

2.4. Endpoints and follow-up

The primary endpoint was MACE, which included cardiac death, non-fatal myocardial infarction (MI), appropriate ICD shocks, VT/VF episode in the patients without ICD, or hospitalization for unstable angina pectoris/heart failure over the 5-year follow-up period. The secondary endpoint was hard-MACE, consisting of cardiac death, non-fatal MI, and appropriate ICD shocks over the 5-year period. The follow-up data were obtained from each participating hospital annually until December 2016.

2.5. Statistical analysis

Continuous variables are presented as medians and interquartile ranges (IQRs) and categorical variables as numerals and percentages. Group comparisons were made with Mann-Whitney test for continuous variables, Fisher's exact test for categorical variables, and log-rank test for survival curves. Survival free from MACE or hard-MACE was analyzed by the Kaplan-Meier method. To reduce confounding effects in this observational study, propensity score (PS) methods were used. For the calculation of PS, we used a logistic regression model in which the Caucasian VSA patient characteristics were regressed for the following 14 baseline features; age, sex, hypertension, diabetes mellitus, dyslipidemia, current smoking, previous MI, previous PCI, significant organic stenosis, use of CCBs, nitrates, beta-blockers, ACEI, ARB, and statins. Univariable and multivariable Cox proportional hazard models were applied for hazard ratio (HR) and 95% confidence interval (CI) for the risk of MACE between Japanese and Caucasian VSA patients. A *P* value <0.05 was considered to be statistically significant. The statistical analysis was performed with SPSS statistics 21 (IBM, NY, USA).

3. Results

3.1. Demographic characteristics

The patient characteristics by ethnicity are summarized in Table 1. Japanese VSA patients, as compared with Caucasian patients, were characterized by older age, higher prevalence of males and lower BMI. The proportion of patients with a smoking history was higher in Japanese patients. Additionally, Japanese patients less often had a family history of cardiovascular diseases. Similarly, patients with previous myocardial infarction (MI) were less prevalent among Japanese patients.

Of the entire cohort, 1313 patients (90.1%) experienced spontaneous angina episodes at least once (Table 1). Caucasians had more frequently a combination of chest pain both at rest and on effort. Typical circadian variation of angina attacks with a peak incidence from night to early morning was noted more commonly in Japanese patients, whereas angina attacks occurred throughout the day in Caucasians.

3.2. Angiographic findings during spasm provocation test

Angiographic findings are shown in Table 1. The prevalence of a significant organic stenosis defined as ≥70% luminal narrowing by coronary angiography was similar between the 2 ethnic groups. Spasm provocative testing was performed in 1364 patients (Japanese/Caucasians, 1266/98) with more tests undertaken in Japanese patients. Agents used for pharmacological provocation testing did not differ between the 2 ethnic groups, with ACh most commonly used in both. Importantly, the features of provoked spasm patterns, including focal, diffuse, and mixed type, was almost identical between the 2 ethnicities. Multivessel coronary spasm was documented more frequently in Japanese than in Caucasians. Caucasian patients had a higher incidence of bradycardia and atrioventricular block during the provocation test compared with Japanese patients. Thus, overall incidence of complications during provocation test, most of which was transient hypotension, was significantly higher in Caucasians than in Japanese. Overall, no serious complications related to spasm provocation test were observed except one Japanese

Table 1
Demographic patient characteristics.

	Caucasians	Japanese	P-value
	(n = 118)	(n = 1339)	
Demographic features			
Age (mean ± SD), yrs.	61 ± 12	64 ± 12	0.007
Male, n (%)	60 (51)	913 (68)	<0.001
BMI (kg/m ²)	28 ± 5	24 ± 12	<0.001
Coronary risk factors, n (%)			
Hypertension	66 (56)	757 (57)	0.98
Dyslipidemia	66 (56)	717 (54)	0.55
Diabetes mellitus	19 (16)	257 (19)	0.46
Smoking history	57 (49)	801 (60)	0.019
Family history of IHD	60 (51)	307 (23)	<0.001
Previous history of CVD, n (%)			
Overall	52 (44)	400 (30)	0.001
Myocardial infarction	18 (15)	89 (7)	0.001
Previous PCI	21 (18)	179 (13)	0.18
OHCA	0 (0)	46 (3)	0.041
Features of spontaneous angina episodes^a			
Angina pattern, n (%)			
Rest	46 (60)	808 (67)	0.17
Effort angina	9 (12)	180 (15)	0.43
Mixed pattern (rest and effort)	21 (27)	141 (12)	<0.001
Unknown	1 (1)	71 (6)	0.089
Circadian pattern, n (%)			
Daytime (6 AM–6 PM)	16 (22)	389 (34)	0.033
Night to morning (6 PM–6 AM)	9 (12)	396 (34)	<0.001
Throughout the day (no circadian pattern)	49 (66)	371 (32)	<0.001
Ischemic ST-segment change during spontaneous attack, n (%)			
ST elevation	12 (16)	168 (14)	0.55
ST depression	22 (30)	107 (9)	<0.001
Associated arrhythmic events during spontaneous attack, n (%)			
PVC	2 (3)	18 (2)	0.43
VT/VF	1 (1)	40 (3)	0.34
Bradycardia	5 (7)	10 (1)	<0.001
AV block	1 (1)	11 (1)	0.72
Angiographic findings and safety of provocation testing			
Coronary angiography^b, n (%)			
Organic stenosis 70%	109 (93.2)	1333 (99.6)	0.049
Organic stenosis 90%	6 (5.5)	156 (11.7)	0.12
Organic stenosis ≥99%	9 (8.3)	65 (4.9)	0.45
2-vessel disease	2 (1.8)	14 (1.1)	0.84
3-vessel disease	2 (1.8)	21 (1.6)	0.60
Provocation test, n (%)	1 (0.9)	7 (0.5)	<0.001
Provocation agent (ACh/ER/others), n (%)	98 (84)	1266 (95)	0.44
	90 (92)/8	1108	
	(8)	(88)/144	
	/0 (0)	(11)	
		/8 (1)	
Target vessel of provocation test, n (%)			
LCA	69 (70)	417 (33)	<0.001
RCA	14 (14)	183 (14)	0.97
Both LCA and RCA	15 (15)	666 (53)	<0.001
Type of provoked spasm, n (%)^c			
Diffuse	66 (70)	839 (68)	0.77
Focal	20 (21)	228 (19)	0.54
Mixed	9 (10)	167 (14)	0.26
Multivessel, n (%)	4 (3)	239 (18)	<0.001
Arrhythmias during provocation test, n (%)			
Overall	29 (28)	161 (13)	<0.001
PVC	1 (1)	26 (2)	0.48
VT/VF	1 (1)	24 (2)	0.53
AV block	5 (5)	18 (2)	0.006
Bradycardia	15 (16)	38 (3)	<0.001
Cardiac arrest	0 (0)	1 (0.1)	0.78
PAF	3 (3)	43 (4)	0.86
Complications, n (%)			
Overall	7 (7)	19 (2)	<0.001
Transient hypotension	7 (7)	12 (1)	<0.001
Non-Q wave MI	0	1 (0.1)	0.78
Others	0	6 (0.4)	0.47

case who developed non-Q wave MI. These results confirm that invasive pharmacological provocation test has an acceptable level of safety for diagnosis of VSA regardless of ethnicity, as reported in the recent Japanese and European studies [8,18].

3.3. Treatment after diagnosis

Regarding medical therapy following the diagnosis of VSA, prescription of CCBs was higher in Japanese patients (96 vs. 86%, $P < 0.001$), whereas nitrates (46 vs. 59%, $P = 0.007$), statins (43 vs. 65%, $P < 0.001$), ACE-inhibitors/ARBs (27 vs. 51%, $P < 0.001$), and β -blockers (10 vs. 24%, $P < 0.001$) were more frequently prescribed in Caucasians. Implantation of ICDs was rare but more frequent in Japanese than in Caucasian patients (Table S1).

3.4. Clinical outcomes and prognostic factors for MACE

During the median follow-up period of 39 months (IQR: 24–51 months), 119 Japanese patients (9.0%) and 27 Caucasian patients (23%) reached the primary MACE endpoint (Table S2). The 5-year MACE-free survival rate was marginally better in Japanese VSA patients compared with Caucasians (86.7 vs. 76.6%, $P < 0.001$), whereas those free from the hard-MACE endpoint was similar (96.5 vs. 97.7%, $P = 0.66$; Fig. 1). After performing PS matching for the entire population, 114 matched pairs of patients were identified (Table S3), showing that the long-term prognosis still remained better in the Japanese than in the Caucasians (87.9 vs. 76.7%, $P = 0.012$) (Fig. S2). When patients were classified into 3 risk strata based upon their JCSA score (i.e. low = 0–2, intermediate = 3–5, and high ≥ 6), Kaplan-Meier curves for MACE among the 3 risk groups showed a clear prognostic difference throughout the follow-up period in both Japanese and Caucasian patients (Fig. 2). Moreover, in the multivariable model, the JCSA risk score was significantly correlated with future occurrence of MACE in both ethnicities (Table 2).

4. Discussion

This is the first international large-scale study that examined ethnic differences in contemporary VSA patients between Japanese and Caucasians using the same diagnostic criteria [5,10]. The major findings of the present study were as follows. (1) Ethnic differences in clinical characteristics of VSA patients, including demographics and spontaneous angina features, were present in the modern era with contemporary therapies. (2) The results of spasm provocation testing did not differ between the 2 ethnicities. (3) There was considerable variation in the therapies employed for the treatment of VSA between Japanese and Caucasians. (4) The 5-year MACE-free survival rate was slightly but significantly lower in Caucasian compared with Japanese patients, and the JCSA risk score was useful to predict the occurrence of future MACE in both Japanese and Caucasian patients.

4.1. Demographics and clinical ethnic differences

It has been long believed that the prevalence of VSA patients is higher in Japanese than in Caucasian populations [19,20]. This concept

Notes to Table 1:

ACh = acetylcholine, AV block = atrioventricular block, BMI = body mass index, CVD = cardiovascular disease, ER = ergonovine, IHD = ischemic heart disease, LCA = left coronary artery, MI = myocardial infarction, PAF = paroxysmal atrial fibrillation, PCI = percutaneous coronary intervention, PVC = premature ventricular contraction, OHCA = out-of-hospital cardiac arrest, RCA = right coronary artery, VT = ventricular tachycardia, VF = ventricular fibrillation.

^a Data of spontaneous angina attack were available for 77 Caucasian and 1236 Japanese patients.

^b Coronary angiography was performed in 109 Caucasians and 1333 Japanese patients.

^c Data of type of provoked spasm were available for 98 Caucasians and 1266 Japanese patients.

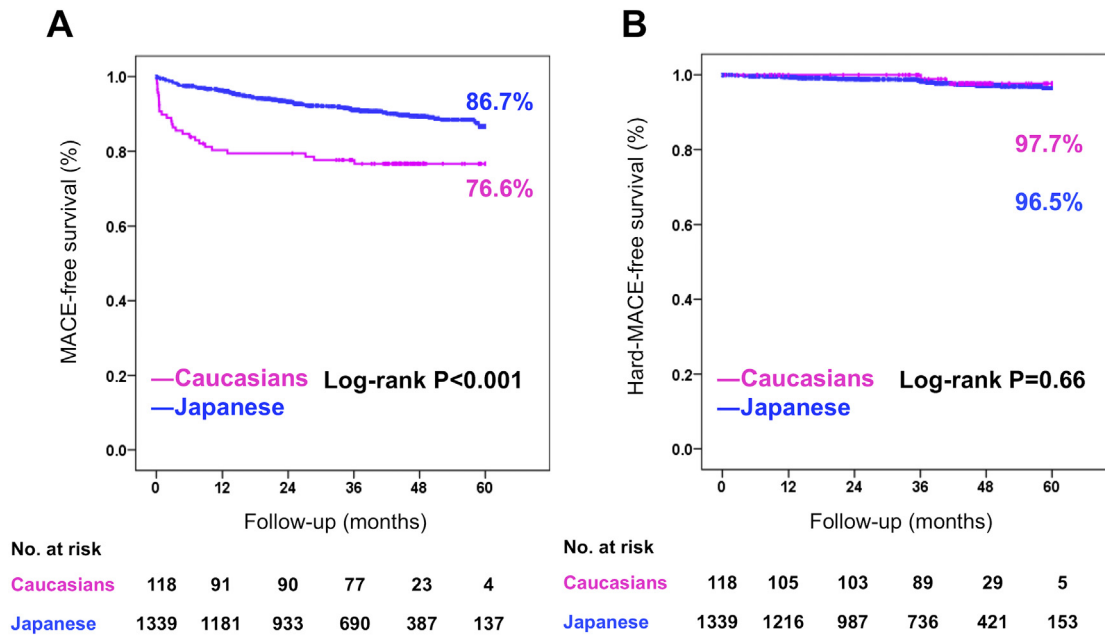


Fig. 1. (A) Kaplan-Meier curves by ethnics for MACE in VSA patients. MACE included cardiac death, non-fatal myocardial infarction, hospitalization for heart failure and unstable angina pectoris, appropriate ICD shocks, and VT/VF in the patients without ICD. (B) Kaplan-Meier curves by ethnics for hard-MACE in VSA patients. Hard-MACE included cardiac death, non-fatal myocardial infarction, VT/VF, and appropriate ICD shocks.

of a higher coronary vasomotor reactivity among Japanese is consistent with a head-to-head controlled comparison of patients with acute ST elevation myocardial infarction (without a clinical history of VSA) where Japanese patients were twice as likely to have inducible spasm than their Caucasian counterparts [21]. Furthermore, it has been described in patients with VSA, that the Japanese have a higher prevalence of diffuse and multivessel coronary spasm although a lower prevalence of significant coronary artery disease compared with Caucasians [11]. However, in Western studies, the diagnosis of VSA was more commonly made on the basis of spontaneous episodes (i.e. anginal symptoms with ischemic ECG changes) [22], whereas in Japan, it is more often based upon spasm provocation testing [7].

The present study demonstrates that demographics of VSA patients may have evolved over time. Indeed, VSA patients in this study were more likely to be elderly female with higher prevalence of hypertension and dyslipidemia, but less likely to have smoking history compared with those evaluated 30 years ago [14]. A similar tendency was also noted in a recent report from Japan that examined the transition of factors related to coronary spasm during the last 2 decades [23]. The present study also demonstrates that some differences are still present in the clinical features of VSA patients between the 2 ethnicities as reported previously, such as male-preponderance and higher prevalence of smoking history in Japanese patients, whereas a history of prior MI was more common in Caucasian VSA patients.

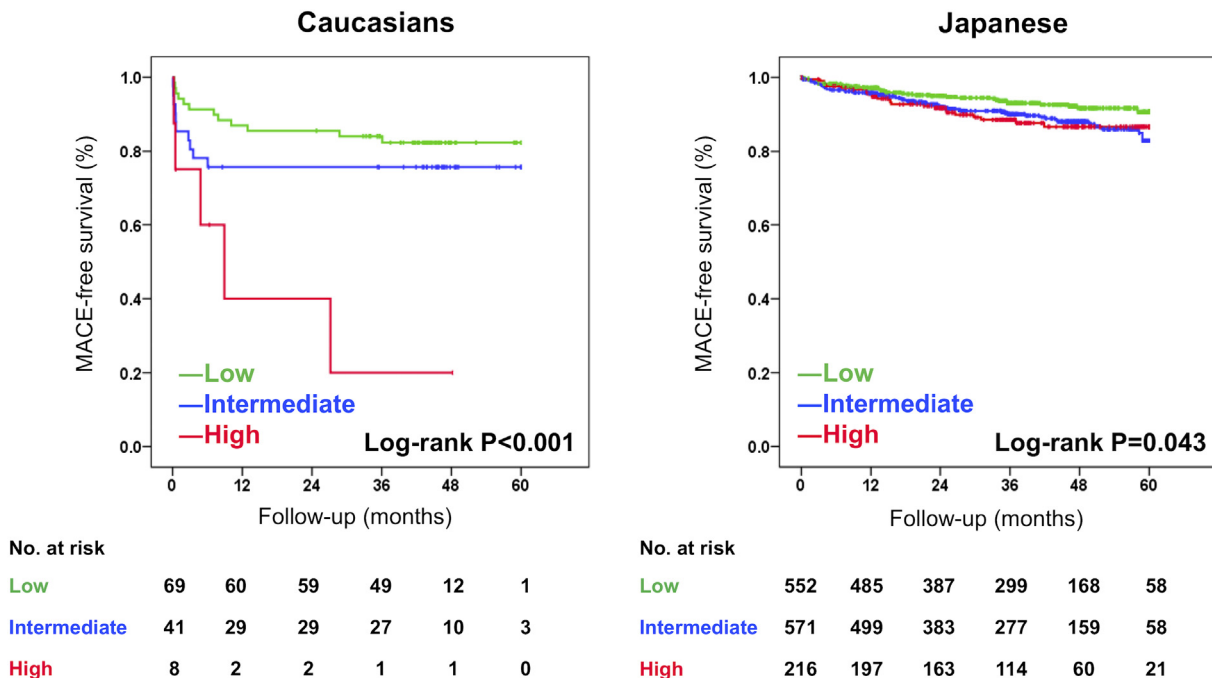


Fig. 2. Kaplan-Meier curves for MACE in Caucasian and Japanese VSA patients according to 3 risk strata divided by the JCSA risk score. (A) Caucasians, (B) Japanese.

Table 2
Correlated factors for MACE in VSA patients.

	Univariable analysis			Multivariable analysis		
	HR	95% CI	P-value	HR	95% CI	P-value
Caucasians						
Age	0.94	0.91–0.97	0.001	0.95	0.92–0.99	0.008
Men	1.27	0.60–2.72	0.54			
Hypertension	0.43	0.20–0.94	0.034			
Dyslipidemia	0.92	0.43–1.96	0.84			
DM	1.21	0.46–3.19	0.71			
MI	1.34	0.50–3.50	0.57			
JCSA risk score	1.362	1.12–1.66	0.002	1.29	1.04–1.60	0.019
Japanese						
Age	1.03	1.01–1.05	0.002	1.03	1.01–1.05	0.001
Men	1.23	0.82–1.83	0.32			
Hypertension	1.57	1.08–2.30	0.020			
Dyslipidemia	1.25	0.87–1.80	0.24			
DM	1.15	0.75–1.78	0.52			
MI	2.15	1.25–3.70	0.006	1.96	1.13–3.37	0.016
JCSA risk score	1.10	1.01–1.19	0.032	1.12	1.03–1.21	0.011

DM = Diabetes mellitus, MI = Myocardial infarction, JCSA = Japanese Coronary Spasm Association.

Classical clinical manifestations of VSA include rest angina readily relieved by short-acting nitrate and a circadian pattern of ischemic episodes with a peak from midnight to early morning, which are important diagnostic criteria for definitive VSA [5,10]. However, importantly, the present study demonstrates that the clinical presentations of spontaneous VSA attacks are significantly different between the 2 ethnic groups. Indeed, although Japanese patients more often presented the above typical clinical manifestations of VSA, that was not the case in Caucasian patients. One of the interesting manifestations of Caucasian patients was that 39% of angina symptoms occurred during exercise. A potential explanation could be that concomitant coronary microvascular dysfunction may account for exertional symptoms in patients with documented epicardial spasm. It has been shown that coronary vasomotor abnormalities may be found in patients with exertional angina and unobstructed coronary artery disease [12], another explanation could be an increased activity of the sympathetic nervous system associated with parasympathetic withdrawal during exercise which has been proposed as a potential trigger for epicardial coronary artery spasm [24]. Additionally, autonomic dysfunction has also been postulated as one of the most important mechanisms of circadian variation of VSA [25]. Thus, it is possible that there could be a fundamental ethnic difference in autonomic nervous system activity in VSA patients.

4.2. Ethnic differences in angiographic findings

There are different patterns of coronary spasm during provocation testing, including focal, diffuse, and mixed-pattern spasm [8]. Notably, the spasm pattern is not only a surrogate marker reflecting coronary vasomotor reactivity but also a predictor of long-term prognosis of VSA patients [8,26], indicating that the spasm provocation test could provide useful information for the management of VSA patients. Indeed, in the present study, 84% of Caucasian patients and 95% of Japanese patients underwent invasive provocation test to ensure a confirmed diagnosis of VSA. Importantly, in both ethnic groups, two-thirds of the patients had diffuse spasm and ~20% focal spasm during the provocation test. These results are consistent with the previous studies showing that diffuse spasm is frequent in contemporary Caucasian patients with angina and non-obstructive coronary artery disease [12,27]. As demonstrated in a population-based autopsy study, the prevalence and severity of coronary artery disease has been decreasing in Caucasians [28]. Indeed, about 30 years ago, Bertrand et al. reported that 60% of focal coronary spasm occurred in pre-existing atherosclerotic lesions in a large French cohort study [19], whilst in the present study we found that only 13% of the contemporary Caucasian VSA patients had significant fixed coronary atherosclerosis. Thus, in contemporary Caucasian VSA patients, the

decline in the extent of coronary atherosclerosis could be associated with the alteration in coronary vasomotor responses.

4.3. Ethnic differences in medical treatment and long-term prognosis

We previously demonstrated that Caucasian VSA patients had a higher incidence of death or MI than Japanese VSA patients, which might relate to their more extensive coronary artery disease [11,14]. However, in the present study, the incidence of hard-MACE in Caucasian patients, including cardiac death, non-fatal MI, and ICD shocks, was comparable to that in Japanese patients (Caucasians 1.6% vs. Japanese 2.0% at 5 years, $P = 0.81$), a finding in line with other recent studies [9,29]. The decline in the extent of coronary atherosclerosis in contemporary Caucasians may have contributed to the improvement in the long-term prognosis of these patients. However, hospitalization for unstable angina still developed more frequently in Caucasian patients during the follow-up, resulting in a higher incidence of MACE as compared with Japanese patients. There may be 2 reasons for the prognostic differences between the two ethnicities in the modern era. First, the use of CCBs was lower in Caucasian than in Japanese patients (86 vs. 96%, $P < 0.001$). CCBs are the established first-line therapy for VSA [5]. Indeed, it is important to note in the present study that MACE occurred mainly in the first few months of follow-up in Caucasian patients as was the case in the previous study [22]. Second, age and gender are important prognostic factors in VSA patients. We have previously shown that younger age (<50 years) was a significant negative prognostic factor in female but not in male VSA patients [30]. In the present study, the prevalence of young female patients was significantly higher in Caucasians than in Japanese (9.3 vs. 2.5%, $P < 0.001$) (Fig. S1). Importantly, in the present study, multivariable analysis also showed that younger age was associated with increased occurrence of MACE in Caucasian patients, but older age was so in Japanese patients (Table 2). As shown in Fig. S2, the 5-year MACE-free survival rate was still better in Japanese VSA patients compared with Caucasians even after performing the PS matching. This finding suggests that ethnicity has a prognostic impact in VSA patients, although the sample size of the PS-matching cohort was small. Of interest, the present study confirmed the usefulness of the JCSA risk score not only in Japanese VSA patients but also in Caucasian VSA patients. Since individual prognostic stratification is important for personalized medicine, the JCSA score should help physicians improve the management of VSA patients in clinical practice worldwide.

4.4. Study limitations

Several limitations should be considered in interpreting the results reported in the present study. First, the number of Caucasian patients with VSA was relatively small compared with Japanese patients. However, we were able to demonstrate the important differences in the clinical characteristics and long-term prognosis between the 2 ethnicities. Second, in the present study, spasm provocation tests were not performed for both left and right coronary arteries in all subjects for various reasons. Only a half of Japanese patients and 15% of Caucasians underwent provocation tests in both coronary arteries. Thus, it is possible that the frequency of multivessel spasm was underestimated. Third, in the present study, we exclusively examined epicardial coronary spasm but coronary microvascular dysfunction remains to be evaluated. Fourth, since there was no information available on the use of temporary pacing during spasm provocation test, the incidence of Bradyarrhythmias may have been underestimated. Fifth, the information on medications was obtained at the beginning of follow-up, and additional information on the changes in medications during follow-up was not available. Sixth, we did not use a core lab for analysis of angiographic data, which were left to visual judgement by the attending experienced cardiologists in each institution. Seventh, the composite primary and secondary endpoints were used. However, despite these limitations, the present findings should merit emphasis for a better understanding

of the differences and similarities between Caucasians and Japanese VSA patients in the modern era.

4.5. Conclusions

This is the largest international and prospective study in VSA patients diagnosed based on the same criteria. It provides the first evidence that there are ethnic differences in clinical characteristics and long-term prognosis between contemporary Caucasian and Japanese VSA patients.

Acknowledgments

We thank Ms. Aya Okubo for her assistance for the Japanese Coronary Spasm Association.

Funding

This work was supported by the Japan Heart Foundation, Tokyo, Japan.

Conflict of interest

We have no conflict of interest.

Appendix A. Supplementary data

Supplementary data to this article can be found online at <https://doi.org/10.1016/j.ijcard.2019.02.038>.

References

- [1] A. Maseri, J.F. Beltrame, H. Shimokawa, Role of coronary vasoconstriction in ischemic heart disease and search for novel therapeutic targets, *Circ. J.* 73 (2009) 394–403, <https://doi.org/10.1253/circj.CJ-09-0033>.
- [2] H. Shimokawa, 2014 Williams Harvey lecture: importance of coronary vasomotion abnormalities—from bench to bedside, *Eur. Heart J.* 35 (2014) 3180–3193, <https://doi.org/10.1093/eurheartj/ehu427>.
- [3] J.F. Beltrame, F. Crea, J.C. Kaski, et al., Coronary Vasomotion Disorders International Study G, The who, what, why, when, how and where of vasospastic angina, *Circ. J.* 80 (2016) 289–298, <https://doi.org/10.1253/circj.CJ-15-1202>.
- [4] M. Prinzmetal, R. Kenamer, R. Merliss, T. Wada, N. Bor, Angina pectoris. I. A variant form of angina pectoris; preliminary report, *Am. J. Med.* 27 (1959) 375–388, [https://doi.org/10.1016/0002-9343\(59\)90003-8](https://doi.org/10.1016/0002-9343(59)90003-8).
- [5] JCS Joint Working Group, Guidelines for diagnosis and treatment of patients with vasospastic angina (coronary spastic angina) (JCS 2013), *Circ. J.* 78 (2014) 2779–2801, <https://doi.org/10.1253/circj.CJ-66-0098>.
- [6] J. Takahashi, T. Nihei, Y. Takagi, et al., Japanese Coronary Spasm A, Prognostic impact of chronic nitrate therapy in patients with vasospastic angina: multicentre registry study of the Japanese Coronary Spasm Association, *Eur. Heart J.* 36 (2015) 228–237, <https://doi.org/10.1093/eurheartj/ehu313>.
- [7] Y. Takagi, S. Yasuda, R. Tsunoda, et al., Japanese Coronary Spasm A, Clinical characteristics and long-term prognosis of vasospastic angina patients who survived out-of-hospital cardiac arrest: multicenter registry study of the Japanese Coronary Spasm Association, *Circ. Arrhythm. Electrophysiol.* 4 (2011) 295–302, <https://doi.org/10.1161/CIRCEP.110.959809>.
- [8] Y. Takagi, S. Yasuda, J. Takahashi, et al., Japanese Coronary Spasm A, Clinical implications of provocation tests for coronary artery spasm: safety, arrhythmic complications, and prognostic impact: multicentre registry study of the Japanese Coronary Spasm Association, *Eur. Heart J.* 34 (2013) 258–267, <https://doi.org/10.1093/eurheartj/ehs199>.
- [9] Y. Takagi, J. Takahashi, S. Yasuda, et al., Japanese Coronary Spasm A, Prognostic stratification of patients with vasospastic angina: a comprehensive clinical risk score developed by the Japanese Coronary Spasm Association, *J. Am. Coll. Cardiol.* 62 (2013) 1144–1153, <https://doi.org/10.1016/j.jacc.2013.07.018>.
- [10] J.F. Beltrame, F. Crea, J.C. Kaski, et al., Coronary Vasomotion Disorders International Study G, International standardization of diagnostic criteria for vasospastic angina, *Eur. Heart J.* 38 (2017) 2565–2568, <https://doi.org/10.1093/eurheartj/ehv351>.
- [11] J.F. Beltrame, S. Sasayama, A. Maseri, Racial heterogeneity in coronary artery vasomotor reactivity: differences between Japanese and Caucasian patients, *J. Am. Coll. Cardiol.* 33 (1999) 1442–1452, [https://doi.org/10.1016/S0735-1097\(99\)00073-X](https://doi.org/10.1016/S0735-1097(99)00073-X).
- [12] P. Ong, A. Athanasiadis, G. Borgulya, H. Mahrholdt, J.C. Kaski, U. Sechtem, High prevalence of a pathological response to acetylcholine testing in patients with stable angina pectoris and unobstructed coronary arteries. The ACOVA study (Abnormal Coronary Vasomotion in patients with stable angina and unobstructed coronary arteries), *J. Am. Coll. Cardiol.* 59 (2012) 655–662, <https://doi.org/10.1016/j.jacc.2011.11.015>.
- [13] R.A. Montone, G. Niccoli, F. Fracassi, et al., Patients with acute myocardial infarction and non-obstructive coronary arteries: safety and prognostic relevance of invasive coronary provocative tests, *Eur. Heart J.* 39 (2018) 91–98, <https://doi.org/10.1093/eurheartj/ehx667>.
- [14] H. Shimokawa, K. Nagasawa, T. Irie, et al., Clinical characteristics and long-term prognosis of patients with variant angina. A comparative study between western and Japanese populations, *Int. J. Cardiol.* 18 (1988) 331–349, [https://doi.org/10.1016/0167-5273\(88\)90052-6](https://doi.org/10.1016/0167-5273(88)90052-6).
- [15] Japanese Society of Hypertension Guidelines Subcommittee for the Management of Hypertension, Japanese Society of Hypertension guidelines for the management of hypertension (JSH 2004), *Hypertens. Res.* 29 (Suppl) (2006) S1–S105.
- [16] Y. Saito, Editorial: guidelines for diagnosis and treatment of atherosclerotic cardiovascular diseases 2002, *J. Atheroscler. Thromb.* 11 (2004) 101–103.
- [17] Japan Diabetes Society, Japan Diabetes Society of Guidelines for Treatment of Diabetes Mellitus 2006–2007 (in Japanese), Bunkodo, Tokyo, 2006.
- [18] P. Ong, A. Athanasiadis, G. Borgulya, et al., Clinical usefulness, angiographic characteristics, and safety evaluation of intracoronary acetylcholine provocation testing among 921 consecutive white patients with unobstructed coronary arteries, *Circulation* 129 (2014) 1723–1730, <https://doi.org/10.1161/CIRCULATIONAHA.113.004096>.
- [19] M.E. Bertrand, J.M. LaBlanche, P.Y. Tilmant, et al., Frequency of provoked coronary arterial spasm in 1089 consecutive patients undergoing coronary arteriography, *Circulation* 65 (1982) 1299–1306, <https://doi.org/10.1161/01.CIR.65.7.1299>.
- [20] S. Sueda, N. Ochi, H. Kawada, et al., Frequency of provoked coronary vasospasm in patients undergoing coronary arteriography with spasm provocation test of acetylcholine, *Am. J. Cardiol.* 83 (1999) 1186–1190, [https://doi.org/10.1016/S0002-9149\(99\)00057-0](https://doi.org/10.1016/S0002-9149(99)00057-0).
- [21] C. Pristipino, J.F. Beltrame, M.L. Finocchiaro, et al., Major racial differences in coronary constrictor response between Japanese and Caucasians with recent myocardial infarction, *Circulation* 101 (2000) 1102–1108, <https://doi.org/10.1161/01.cir.101.10.1102>.
- [22] G.A. Lanza, A. Sestito, G.A. Sgueglia, et al., Current clinical features, diagnostic assessment and prognostic determinants of patients with variant angina, *Int. J. Cardiol.* 118 (2007) 41–47, <https://doi.org/10.1016/j.ijcard.2006.06.016>.
- [23] M. Ishii, K. Kaikita, K. Sato, et al., Changes in the risk factors for coronary spasm, *Int. J. Cardiol. Heart Vasc.* 12 (2016) 85–87, <https://doi.org/10.1016/j.ijcha.2016.07.008>.
- [24] D.L. Levene, M.R. Freeman, Alpha-adrenoceptor-mediated coronary artery spasm, *JAMA* 236 (1976) 1018–1022, <https://doi.org/10.1001/jama.1976.03270100018019>.
- [25] D.D. Waters, D.D. Miller, A. Bouchard, X. Bosch, P. Theroux, Circadian variation in variant angina, *Am. J. Cardiol.* 54 (1984) 61–64, [https://doi.org/10.1016/0002-9149\(84\)90304-7](https://doi.org/10.1016/0002-9149(84)90304-7).
- [26] K. Sato, K. Kaikita, N. Nakayama, et al., Coronary vasomotor response to intracoronary acetylcholine injection, clinical features, and long-term prognosis in 873 consecutive patients with coronary spasm: analysis of a single-center study over 20 years, *J. Am. Heart Assoc.* 2 (2013), e000227, <https://doi.org/10.1161/JAHA.113.000227>.
- [27] I. Coma-Canella, S. Castano, A. Macias, J. Calabuig, M. Artaiz, Ergonovine test in angina with normal coronary arteries. Is it worth doing it? *Int. J. Cardiol.* 107 (2006) 200–206, <https://doi.org/10.1016/j.ijcard.2006.08.004>.
- [28] P.N. Nemetz, V.L. Roger, J.E. Ransom, K.R. Bailey, W.D. Edwards, C.L. Leibson, Recent trends in the prevalence of coronary disease: a population-based autopsy study of nonnatural deaths, *Arch. Intern. Med.* 168 (2008) 264–270, <https://doi.org/10.1001/archinternmed.2007.79>.
- [29] P. Ong, A. Athanasiadis, G. Borgulya, M. Voehringer, U. Sechtem, 3-year follow-up of patients with coronary artery spasm as cause of acute coronary syndrome: the CASPAR (coronary artery spasm in patients with acute coronary syndrome) study follow-up, *J. Am. Coll. Cardiol.* 57 (2011) 147–152, <https://doi.org/10.1016/j.jacc.2010.08.626>.
- [30] A. Kawana, J. Takahashi, Y. Takagi, et al., Japanese Coronary Spasm Association, Gender differences in the clinical characteristics and outcomes of patients with vasospastic angina—a report from the Japanese Coronary Spasm Association, *Circ. J.* 77 (2013) 1267–1274, <https://doi.org/10.1253/circj.CJ-12-1486>.